



2026  
ENGLISH VERSION

# Redefining the Skyline through Innovative Engineering

Building Spaces that Define the Cities of Tomorrow.

[www.acefacades.com](http://www.acefacades.com)

# Redefining the Skyline through Innovative Engineering

Building Spaces that Define the Cities of Tomorrow.

**Ace Facades** is a specialist façade engineering and contracting company delivering high-performance building envelopes across hospitality, commercial, public, and mixed-use developments. We combine precision engineering, advanced glazing and cladding systems, and disciplined execution to translate architectural vision into durable, climate-responsive structures. From concept to completion, our work is defined by technical depth, craftsmanship, and long-term performance.

## Company Overview



## Integrated Solutions



## Strategic Partnerships



## Featured Projects



## TABLE OF CONTENTS

### 01. Company Overview

- 04 At a Glance
- 05 Story and Key Highlights
- 06 Our Team
- 07 Certifications

### 02. Integrated Solutions

- 10 Facade Solutions
- 11 Aluminium & Glazing Works
- 12 Manufacturing
- 13 Project Management
- 14 Quality Assurance & Sustainability
- 15 System Testing
- 16 Export & Logistics

### 03. Strategic Partnerships

- 18 Schüco
- 19 Reynaers Aluminium
- 20 Dow
- 21 Ascale
- 22 Alumil
- 23 Saint-Gobain
- 24 Dott.Gallina
- 25 Dormakaba
- 26 Alucobond
- 27 Equitone
- 28 Argeton
- 29 Faveker
- 30 Italmesh
- 31 Fundermax
- 32 WoodN Industries
- 33 Trimo

### 04. On-Going Projects

- 35 Villaggio Vista Echo Tower
- 36 Courtyard by Marriott Hotel
- 37 Nestav Hangar
- 38 Sifax Head Office
- 39 World Bank Head Office
- 40 Marble House
- 41 Novotel Hotel
- 42 Radisson Hotel
- 43 Abuja Continental Hotel

### 05. Completed Projects

- 45 Irish Embassy
- 46 Hyatt Hotel
- 47 VICI Restaurant
- 48 First Pension Custodian
- 49 Okija Event Center
- 50 The Phoenix
- 51 IBIS Styles
- 52 Greystone Tower
- 53 VRA Akuse
- 54 Bay Atlantic

### 06. Contact Information

- 56 Ace Facades Contact Information

SCAN HERE TO VISIT THE COMPANY WEBSITE



# Company Overview



01

ACE  
FACADES

## We believe in building long-lasting collaborations with our partners, for a better built environment.

For over two decades, Ace Facades has been a definitive force in the engineering, fabrication, and realization of world-class building envelopes. We operate at the intersection of architectural vision and technical precision, delivering high-performance facade solutions for landmark residential developments, commercial precincts, and the complex urban icons that define the modern skyline.

As a dedicated collective of specialists, we are driven by a singular mission: to master the art of the building skin. We believe a facade is more than an exterior; it is a catalyst for extraordinary experiences—blending timeless craftsmanship with advanced technology to move design, sustainability, and urban culture forward.

Our commitment to excellence is anchored in a global network of collaboration. By fostering deep synergies with the world's leading architects, developers, and fabricators, we transform "A World of Possibilities" into structural reality. This exchange of expertise powers our innovation, allowing us to integrate cutting-edge materials and intelligent systems that set new benchmarks for the industry.



OPERATING REGIONS



Projects Completed



Global Partnerships



Dedicated Employees (200+) Contract Staff

## Evolving Beyond Facades: Delivering Complete Performance

As the world demands more from buildings in terms of energy efficiency, fire safety, resilience, health and architectural expression — Ace Facades has expanded its capabilities beyond products and fabrication alone.

Today, we provide a comprehensive range of services that support projects throughout the entire lifecycle of the building envelope. This includes project management expertise, rigorous quality assurance and testing, and integrated export and logistics capabilities to support projects across regions.



## We are different by design.



### A Strategic Hub in Dubai

Our expansion into Dubai marks a new chapter in Ace Facades' global development. While the majority of our projects remain across Africa, the Dubai office serves as a strategic hub for manufacturing, coordination, and export. From this base, we partner with international contractors and project teams, supporting the delivery of their developments across Africa with precision, scale, and reliability.



### Engineering and Innovation

Continuous investment in technology and expertise drives our evolution. From advanced façade engineering software to the adoption of unitized curtain wall systems, Ace Facades is advancing how modern façades are designed, fabricated, and installed.



### Milestones That Define Our Path

Our growth has been marked by important achievements — from becoming a Schüco Premium Partner, to acquiring advanced HiCAD façade engineering software, and delivering landmark projects such as The Villagio in Accra, the tallest building in Ghana. These milestones reflect our commitment to innovation, capability, and continuous progress.

## Key Highlights



Ace Facades Flagship Project, **The Villagio Accra** — the tallest building in Ghana.

**Two major fabrication machines** were acquired, installed, and operational in November 2025.

AUG **2025**

Ace Facades established in Dubai to oversee production and export finished goods to Africa.



Ace Facades Dubai is also setting up manufacturing and production operations.

ACE is championing the shift from traditional curtain wall systems to **unitized curtain wall installation** in Africa

**#2** Company in Africa to acquire **HiCAD façade engineering software license** • This enables us to execute full façade engineering design in-house.



**SCHÜCO**

Partner

Major partnership agreement signed with **Schüco** • In 2026, we were formally issued a Premium Partner Certificate.

MAR **2025**

Partnership agreement signed with **Dow Inc.** for silicone systems on 4 March 2026.

Partnership agreement signed with **Ascale** in December 2024.

Certified by **Reynaers Aluminium** in March 2025 for the fabrication of bulletproof window systems locally.

## Our Team



### Ayo Igwe

GROUP MANAGING DIRECTOR  
ACE FACADES LTD

Ayo Igwe has over 20 years' experience working in the Aluminium and Glazing sector of the Construction Industry. He has hands-on experience in managing projects from design stages to final completion. He started the business in Lagos, Nigeria towards the end of 2005 and has grown the business over the years with branches in Ghana, Ivory Coast and United Arab Emirates.

Ayo Igwe holds a B.Sc in Electrical Engineering from University of Lagos. He's married with 3 kids. He's from Delta State, Nigeria



### Daniel Paul Marshall

HEAD OF DESIGN  
ACE FACADES LTD

Daniel has spent over 20 years working in the construction sector for international architects, developers and contractors. Over this period, he has developed a strong understanding of building detailing, construction techniques and detailed façade design. Daniel is a qualified Architect, studying at the Bartlett, UCL and gaining RIBA Part 3 in 2007. Between 2009-2014 he worked with Trassacco Estates Development Company Ltd (TEDC) in Ghana as the Project Architect on the Villaggio Vista development.

His role at Ace Façades covers many aspects of the façade design process from inception to completion.

# Certifications



Certificate of Formation  
ACE FACADES TRADING - FZCO

U.A.E



Certificate of Incorporation  
ACE FACADES LIMITED

NIGERIA



Certificate of Incorporation  
ACE FACADES LIMITED

GHANA



Certificat D'Immatriculation Unique De L'Entreprise  
ACE FACADES COTE D'IVOIRE

IVORY COAST



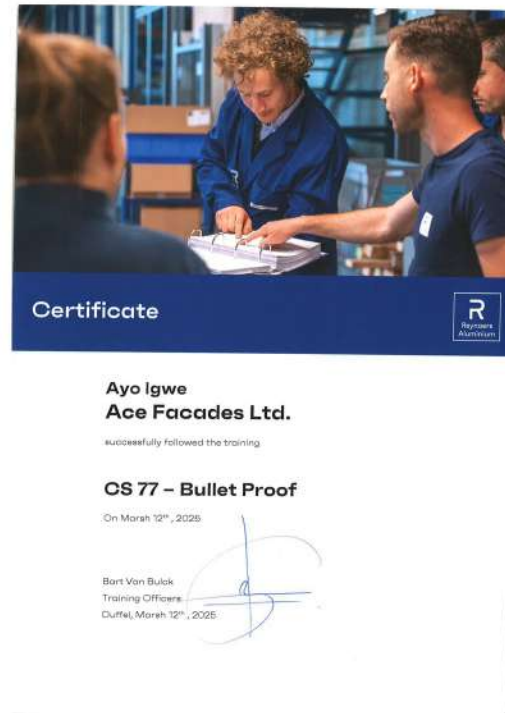
# Certifications



Schüco International KG  
OFFICIAL PREMIUM PARTNER

Fabrication of High-quality Aluminium constructions on the basis of **Schüco International KG system solutions.**

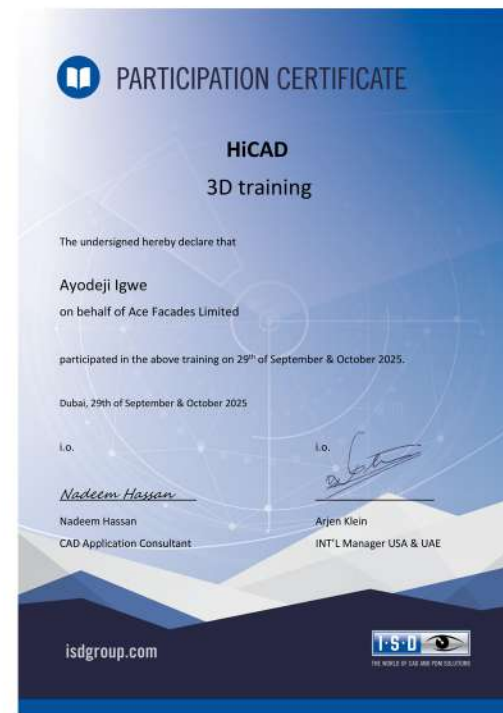
Employees have attended **complying trainings and certified to give customers advice** regarding the use of Schüco Aluminium-systems.



Reynaers Aluminium  
CERTIFICATE- CS77 - Bullet Proof (2025)

Reynaers Aluminium  
CERTIFICATE- CS77 - FP (2025)

Reynaers Aluminium  
CERTIFICATE- CW50 - FP (2025)



HiCAD  
CERTIFICATE- 3D Training (2025)

- CERTIFICATE- 2D Training (2025)
- CERTIFICATE- Sheetmetal Training (2025)
- CERTIFICATE- Beams Training (2025)
- CERTIFICATE- Element Installation Training (2025)
- CERTIFICATE- Metal Engineering Training (2025)



Schüco International KG  
OFFICIAL PREMIUM PARTNER



# Integrated Solutions



02

ACE  
FACADES

## Facade Solutions — delivering intelligent strategies that are designed to be built, perform, and endure.

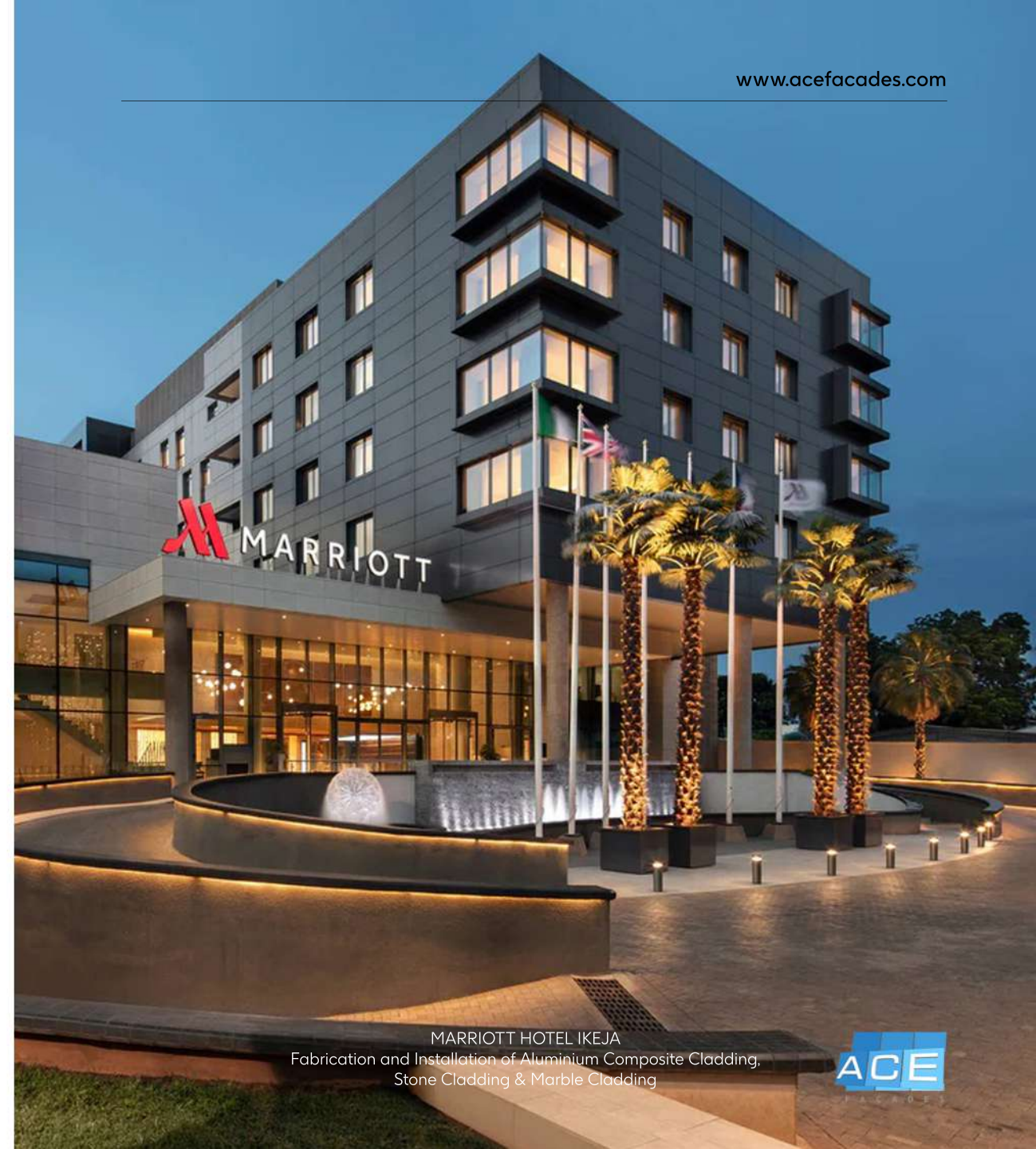
We engage at the earliest stages of project development, working closely with architects, consultants, and developers to shape facade strategies that are both technically sound and architecturally driven. This early involvement allows us to influence design decisions, improve buildability, and create a clear pathway from concept to execution.

Our approach is grounded in a deep understanding of building envelopes, materials, and construction methodologies. By combining engineering precision with practical site and fabrication experience, we develop facade solutions tailored to each project's performance requirements, budget considerations, and architectural intent.

We prioritize **reliability, safety, cost efficiency, aesthetics, and compliance with international standards**, ensuring every solution is not only visually compelling but also structurally and environmentally responsive.

Working in collaboration with our global partners, we deliver a broad range of facade and cladding systems, including prefabricated architectural wall systems, timber cladding, HPL cladding, expanded mesh systems, porcelain tile cladding, terracotta facades, fibre cement panels, aluminium composite cladding, and other bespoke envelope solutions designed to meet specific project demands.

At the core of our service is a commitment to delivering **fully integrated, performance-led facade systems** that bridge design ambition with real-world execution — ensuring durability, precision, and long-term value.



MARRIOTT HOTEL IKEJA  
Fabrication and Installation of Aluminium Composite Cladding,  
Stone Cladding & Marble Cladding



# Aluminium & Glazing Works — shaping light, structure, and transparency with precision.

We deliver aluminium and glazing systems that define how buildings open, connect, and perform. From **curtain walls and window systems to doors and bespoke glazing**, our work sits at the intersection of structure, light, and user experience.

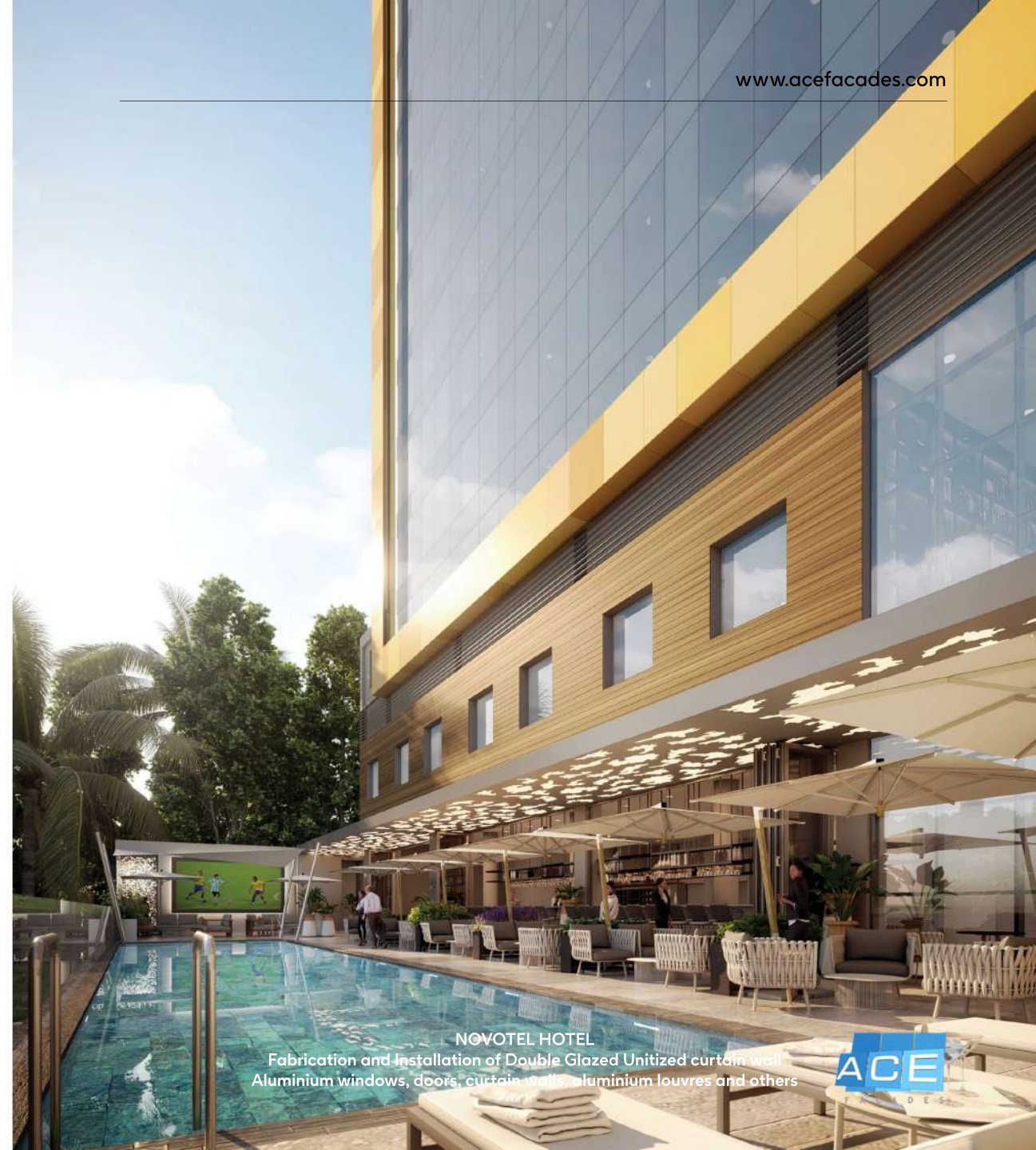
Our approach combines material expertise with precise fabrication and installation, ensuring tight tolerances, clean interfaces, and seamless integration with the wider building envelope. Every system is engineered to withstand environmental forces while maintaining clarity, insulation, and ease of operation.

We focus on delivering assemblies that enhance daylight, visibility, and spatial quality — while meeting stringent requirements for safety, thermal performance, and durability.

Through disciplined execution and attention to detail, we create aluminium and glazing systems that bring transparency, strength, and refinement to modern architecture.

Schüco International KG ALUMINIUM & GLAZING	Reynaers Aluminium ALUMINIUM SOLUTIONS	ALUMIL ALUMINIUM SYSTEMS
Saint-Gobain GLASS PRODUCTS	Dott.Gallina POLYCARBONATES	Dormakaba AUTOMATIC SOLUTIONS

KEY PARTNERSHIPS



NOVOTEL HOTEL  
Fabrication and Installation of Double Glazed Unitized curtain wall, Aluminium windows, doors, curtain walls, aluminium louvres and others



## Manufacturing — delivering precision through control, technology and scale.

Our manufacturing capabilities provide clients with access to a diverse range of advanced facade systems, architectural metal works, and glazing solutions. With facilities in **Lagos and Dubai**, we are strategically positioned to support projects across regions with efficiency and reliability.

Operating in line with **lean manufacturing principles and quality management systems**, our factories are structured for precision, consistency, and scalability. Full control over the production chain allows us to maintain strict oversight on time, quality, and cost — ensuring that every component meets exact project specifications.

Our operations are powered by state-of-the-art machinery and cutting-edge fabrication technologies, enabling us to deliver complex, high-performance systems with accuracy and repeatability. **From CNC machining to advanced cutting, milling, and assembly processes**, our facilities are equipped to meet the evolving demands of modern facade construction.

We continue to invest in digitalisation and advanced engineering tools, integrating software such as **HiCAD, SchuCAL, ReynaerPro, Logikal (Orgadata), AlumiCAL and Calumen** to enhance design coordination, production efficiency, and system accuracy.

Through continuous innovation and process optimization, we deliver manufacturing solutions that combine technical precision, operational efficiency, and dependable output — ensuring every facade system is built to perform from factory to final installation.

Schüco PDG Dual Cut 650  
Double Mitre Saw



SCAN ME

Schüco PAS Compact 650  
Notching Saw



SCAN ME

Schüco Maschine  
AF 450



SCAN ME

NEWLY ACQUIRED SCHÜCO MACHINERY  
Ace Facades Fabrication Machines installed and operational  
Scan QR codes to watch videos

## Project Management — orchestrating complexity into seamless delivery.

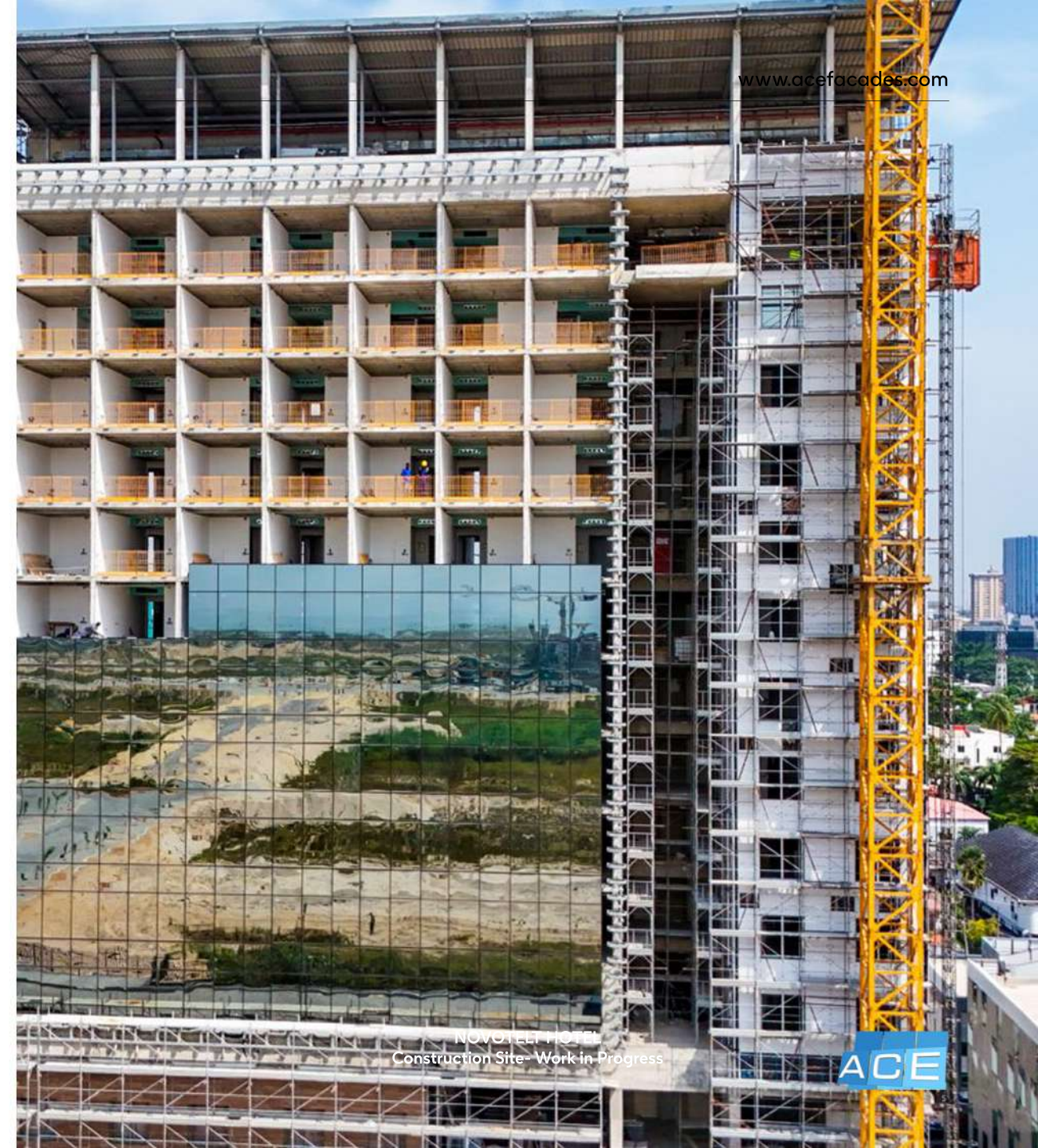
We manage facade projects from **early planning through to turnkey execution**, bringing structure, clarity, and control to every stage of delivery. Working closely with clients, consultants, and contractors, we ensure that design intent is preserved while aligning programme, cost, and technical requirements.

Our experience spans complex facade systems, aluminium and glazing works, and high-performance building envelopes across a range of sectors and project scales. This **depth of expertise allows us to anticipate challenges early, coordinate interfaces effectively, and maintain momentum from design development through to installation.**

At the core of our approach is integration. We align engineering, fabrication, logistics, and on-site execution into a single, coordinated workflow — ensuring consistency, minimizing risk, and delivering predictable outcomes. Our teams maintain close oversight at every stage, enabling informed decision-making and efficient problem resolution.

With the flexibility to **mobilize across regions**, we support projects wherever they are located, bringing the same level of discipline, responsiveness, and execution excellence to each engagement.

Safety is embedded in everything we do. In line with ISO 45001 standards, we implement rigorous health and safety practices to protect our workforce and project environments, ensuring delivery is not only efficient, but responsible and secure.



## Quality Assurance & Sustainability — embedding performance, responsibility, and consistency at every stage.

Quality assurance underpins everything we deliver. From **design development through to fabrication, installation, and handover**, we implement rigorous processes to ensure every facade system meets **defined standards, client requirements, and long-term performance expectations**.

Our QA framework is built on continuous monitoring, testing, and improvement, supported by ongoing training and technical development across our teams. This ensures that knowledge, precision, and accountability are embedded throughout our operations — **creating a culture focused on efficiency, safety, and uncompromising quality**.

Sustainability is integral to our approach. We support clients in achieving their environmental objectives by delivering high-performance, resource-efficient building envelopes that respond to both regulatory and **project-specific sustainability goals**.

We prioritize the use of durable, recyclable, and low-carbon materials, including advanced aluminium systems, energy-efficient glazing, and integrated facade technologies. We are also committed to **lowering environmental impact through energy-conscious operations**, including the adoption of renewable energy where possible.

Through this integrated approach, Ace Facades delivers facade systems that are not only technically robust and compliant, but also aligned with the growing demand for sustainable, future-ready buildings.



## System Testing — validating performance before it reaches site.

Every facade system we deliver is subjected to **rigorous testing and verification** to ensure it performs under real-world conditions. In collaboration with our global partners, we test systems for weather tightness, structural movement, wind dynamics, impact resistance, acoustics, and fire performance.

Testing is carried out on full-scale prototypes of actual project systems, assembled under controlled conditions and evaluated at independent, accredited laboratories in accordance with UKAS, US, and EN standards, depending on project requirements.

This process ensures that each system is **proven against its design intent**, confirming performance, safety, and compliance before fabrication and installation begin. It also allows us to identify and resolve potential issues early, reducing risk and ensuring reliability on site.

Through this disciplined approach, Ace Facades delivers façade systems that are not only engineered to perform — but independently validated to do so.



## Export & Logistics — delivering facade systems across borders with precision and control

We manage the end-to-end movement of facade systems from production to project site, **ensuring timely, efficient, and secure delivery across regions.** With operations anchored in Lagos and Dubai, we are strategically positioned to support projects across Africa and beyond.

Our logistics framework is built on **careful planning, coordination, and documentation,** enabling seamless handling of packaging, shipping, customs, and on-site delivery requirements. Every component is tracked and managed to ensure it arrives **in sequence, in condition, and ready for installation.**

The Dubai hub plays a critical role in our export strategy — serving as a **central coordination and distribution point** for projects across Africa. From this base, we collaborate with international contractors and project teams, supporting the delivery of facade systems for developments executed across multiple markets.

By integrating logistics with our **manufacturing and project management processes,** we maintain **full visibility and control across the supply chain** — reducing delays, minimizing risk, and ensuring consistency from factory to site.

Through this approach, Ace Facades delivers not just products, but **reliable, cross-border execution** aligned with the demands of modern construction.



CROSS BORDER EXECUTION  
Loading of flat-packed modular components

# Strategic Partnerships

03

ACE

Schüco

SCHÜCO

GERMANY



Country of Origin

The Schüco Group, headquartered in Bielefeld, Germany, develops and sells system solutions for the building envelope made of aluminium, steel and PVC-U. The product portfolio includes window, door, façade, ventilation, security and solar shading systems as well as intelligent and networkable solutions for residential and commercial buildings. In addition, the Schüco Group offers advice and digital solutions for all phases of a construction project — from the initial idea to planning, production and installation through to after-sales service with maintenance and servicing. The portfolio is complemented by machines for fabrication and a customer-centred service.

As one of the leading companies in the construction industry, the Schüco Group is committed to being a pioneer for holistic sustainability and making an active contribution to the realisation of climate neutrality and the circular economy in the construction industry with its products and services.



ACE

## Reynaers Aluminium



BELGIUM



Country of Origin

As a part of the Reynaers Group, Reynaers Aluminium is a leading specialist in the development, distribution and commercialization of innovative and sustainable aluminium architectural solutions. These include a wide variety of window and door systems, curtain walls, sliding systems, and conservatories. Besides the extensive range of standard solutions, they also develop customized solutions, tailored to the individual customer or project. Reynaers Aluminium was founded in 1965, currently employing over 2400 workers in more than 40 countries worldwide and exporting to more than 70 countries on 5 continents.

With a world-class testing and design centre and many years of industry experience, Reynaers Aluminium is proud to be pushing the boundaries of product quality and performance. All products are tested to meet and often exceed the European and American standards for security, weather resistance, thermal insulation, durability, and noise reduction and have been installed in some of the most exposed locations.



Dow



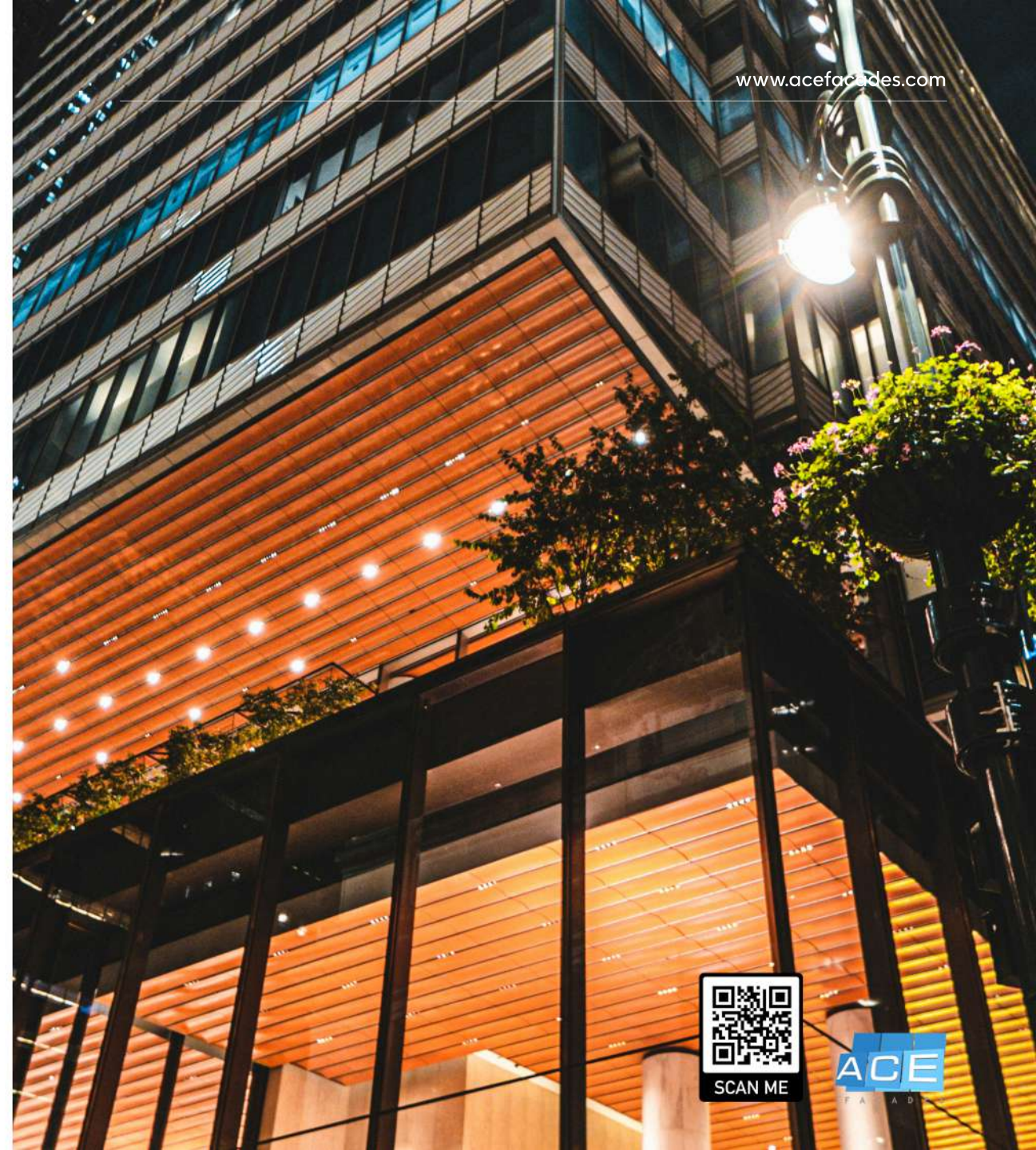
UNITED STATES



Country of Origin

Dow is one of the world's leading materials science companies, serving customers in high-growth markets such as packaging, infrastructure, mobility and consumer applications. The Company's global breadth, asset integration and scale, customer-focused innovation and leading business positions enable it to achieve profitable growth and help deliver a sustainable future. Dow operates manufacturing sites in 29 countries and employs approximately 34,600 people. The Company conducts its worldwide operations through six global businesses which are organized into the following operating segments:

Packaging & Specialty Plastics, Industrial Intermediates & Infrastructure and Performance Materials & Coatings. Dow is committed to building a high-performing, durable, energy-efficient, and sustainable future—working in close collaboration with partners across the value chain to bring this vision to life. From enhancing road durability to advancing wall and façade systems, designing tailored roofing solutions, and developing next-generation flooring and leak-proof pipeline technologies, Dow's innovative construction and infrastructure solutions are engineered to meet the most demanding design and regulatory standards.



Ascale



SPAIN



Country of Origin

As a premier manufacturer of sintered stone, Ascale specializes in transforming architectural spaces into immersive experiences. They operate on a simple yet profound philosophy: the best part of creating something is getting to live within it.

Backed by over 50 years of industry experience, Ascale's history is defined by a constant evolution that keeps them at the cutting edge of both technology and design. By drawing inspiration from the natural world and fueling their process with innovation, they provide a versatile range of materials that empower architects, designers, and builders to realize their most ambitious visions.

Ascale has solidified its position as a leader in the large-format sintered slab market through a relentless passion for excellence. Their operations are uniquely streamlined, with their showroom, offices, and factory all integrated into a single hub in the heart of Spain's historic ceramic district. The factory is equipped with state-of-the-art machinery, reflecting a heavy investment in R&D and future-forward engineering.

From the initial design to the final slab, every detail of Ascale's process is engineered to drive innovation, ensuring that every project they touch becomes a truly unique experience.



ALUMIL



GREECE



Country of Origin

With more than 30 years of experience and 1.700 employees, ALUMIL is one of the most advanced companies globally in the design and production of aluminium architectural systems, owning state-of-the-art production lines in its 18 factories over South Eastern Europe.

ALUMIL produces high quality aluminium systems which are designed and developed in the Group's innovative Research & Development Department and then tested and certified by internationally accredited certification institutes and laboratories. ALUMIL is one of the top suppliers of architectural aluminium systems that meet the highest requirements and cover architectural needs.

ALUMIL's Industrial facilities include:

- (11) Aluminium extrusion lines
- (8) Powder coating lines
- (3) Sublimation lines (wood effect colors)
- (1) Foundry for billet production
- (2) Anodizing plants
- (10) Thermal break assembly lines
- (1) Production site for interior, entrance and security doors
- (1) Manufacturing plant for roll-formed aluminum-foam filled profiles
- (1) Production site for elevators
- (4) Manufacturing plants for system accessories
- (1) Manufacturing plant for aluminum composite panels
- (1) Manufacturing plant for polycarbonate sheets



## Saint-Gobain



FRANCE



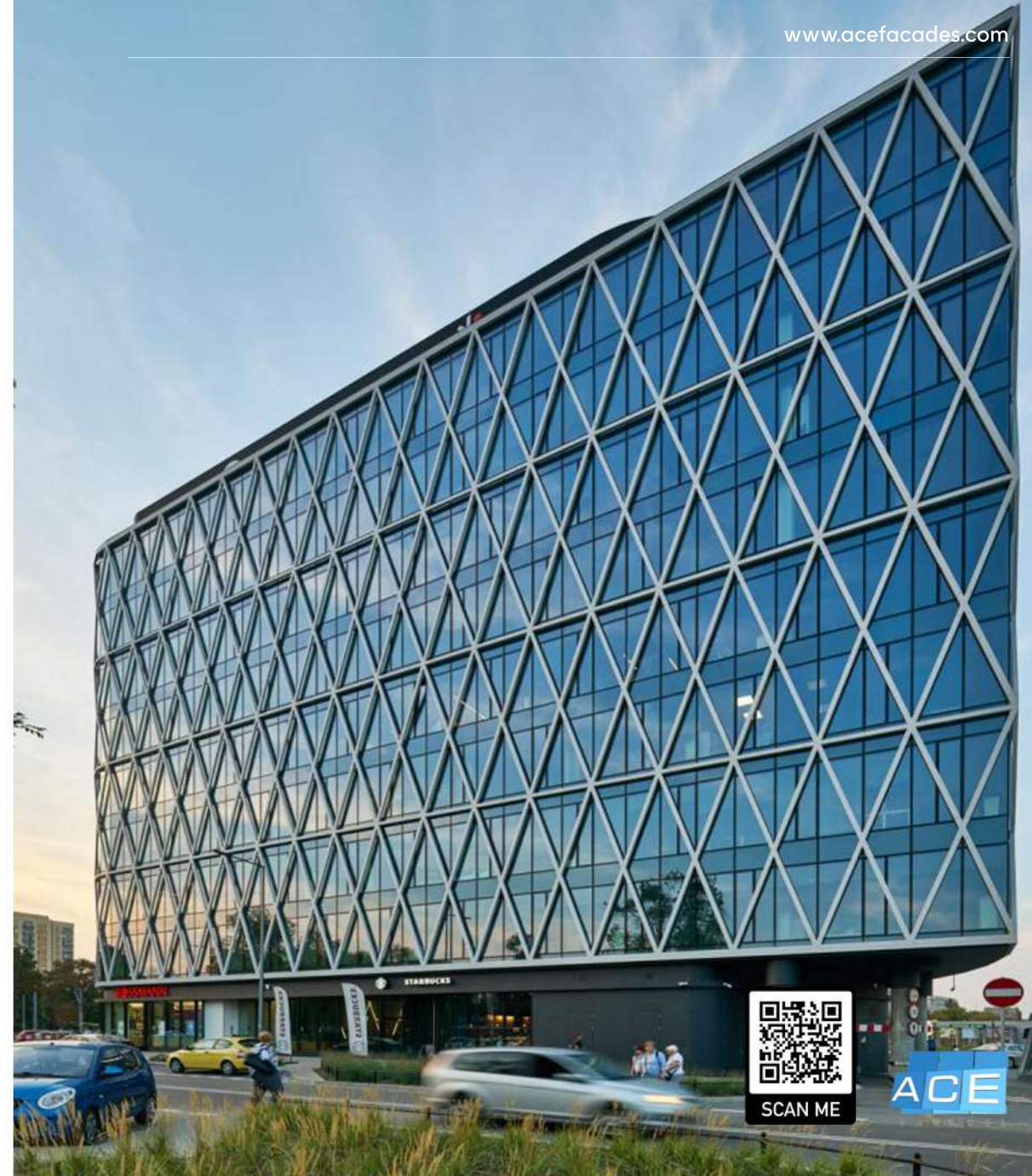
Country of Origin

Since the creation of the Manufactory of Mirror Glass in 1665, Saint-Gobain has always stood out through its capacity to invent products that improve the quality of life of its contemporaries. Saint-Gobain shapes both present and future by drawing from its past. This approach ensures its unparalleled stability and long-term vision.

While the company draws its core values and professional know-how from France, it has also succeeded in building an international brand through a multi-local approach that addresses the specific needs of its customers, and in establishing a strong reputation on every continent.

Through its position as designer, producer and distributor of solutions for the new build and renovation markets, Saint-Gobain is uniquely positioned to define the way the future will be built. They innovate and create new ways of building in order to ensure comfort for all and to contribute to designing buildings that are better for the environment and the climate.

The vision for construction is global in scope. It encompasses quality, comfort and sustainability through the life cycle of their solutions and the buildings for which they are used —from the design stage and the choice of raw materials, through to building and deconstruction stages.



## Dott.Gallina



ITALY



Country of Origin

Dott.Gallina was founded in 1960 in La Loggia, a town nearby Torino, thanks to the Dr. Pier Aulo Gallina entrepreneurial spirit, whose dynamism has provided an impetus to the profiles production for the automotive industry. Today the company is a renowned player for the production of sheets and polycarbonate systems, used to build windows-roofing-façades in the construction industry; Dott.Gallina also represent an excellence in the extrusion of technical profiles designed for industrial and automotive fields. Besides the Italian headquarters, several production units have been created abroad in the US, India, Greece and Turkey, allowing the company to expand worldwide.

Dott.Gallina is characterized by a high technological know-how developed over the years thanks to the investments in design and mechanics workshop in order to create “in house” production lines and equipment, that allow to satisfy the most stringent regulations and specific requests in product customization.

Modular polycarbonate systems for the building sector offer innovative application opportunities, such as in architectural realizations, ensuring high performance in terms of physical-mechanical characteristics, energy saving and aesthetics.



Dormakaba



GERMANY



Country of Origin

When it comes to the safety and security of your building, you have to get it right. But navigating the complexities of modern facilities comes with too many options. Taking on the liabilities and risks associated can feel daunting. We believe it shouldn't be so hard to meet the fundamental need of safety. dormakaba is one of the top access and security companies in the world. When you partner with us, you are never alone. Established in 1980, with the acquisition of Reading Door Closers by Dorma, dormakaba currently has operating sites across the United States, Canada, Mexico, and Brazil.

Through a comprehensive product offering, dormakaba and its brands secure facilities, enable seamless flow, and provide peace of mind. From design to install and maintenance, dormakaba is a trusted partner, enabling our customers to lead with confidence, knowing what matters to them matters to us.

dormakaba Service is your trusted local partner for servicing and maintaining dormakaba products, as well as other leading brands of automatic and manual doors, frames, hardware, and accessories.



## Alucobond



GERMANY



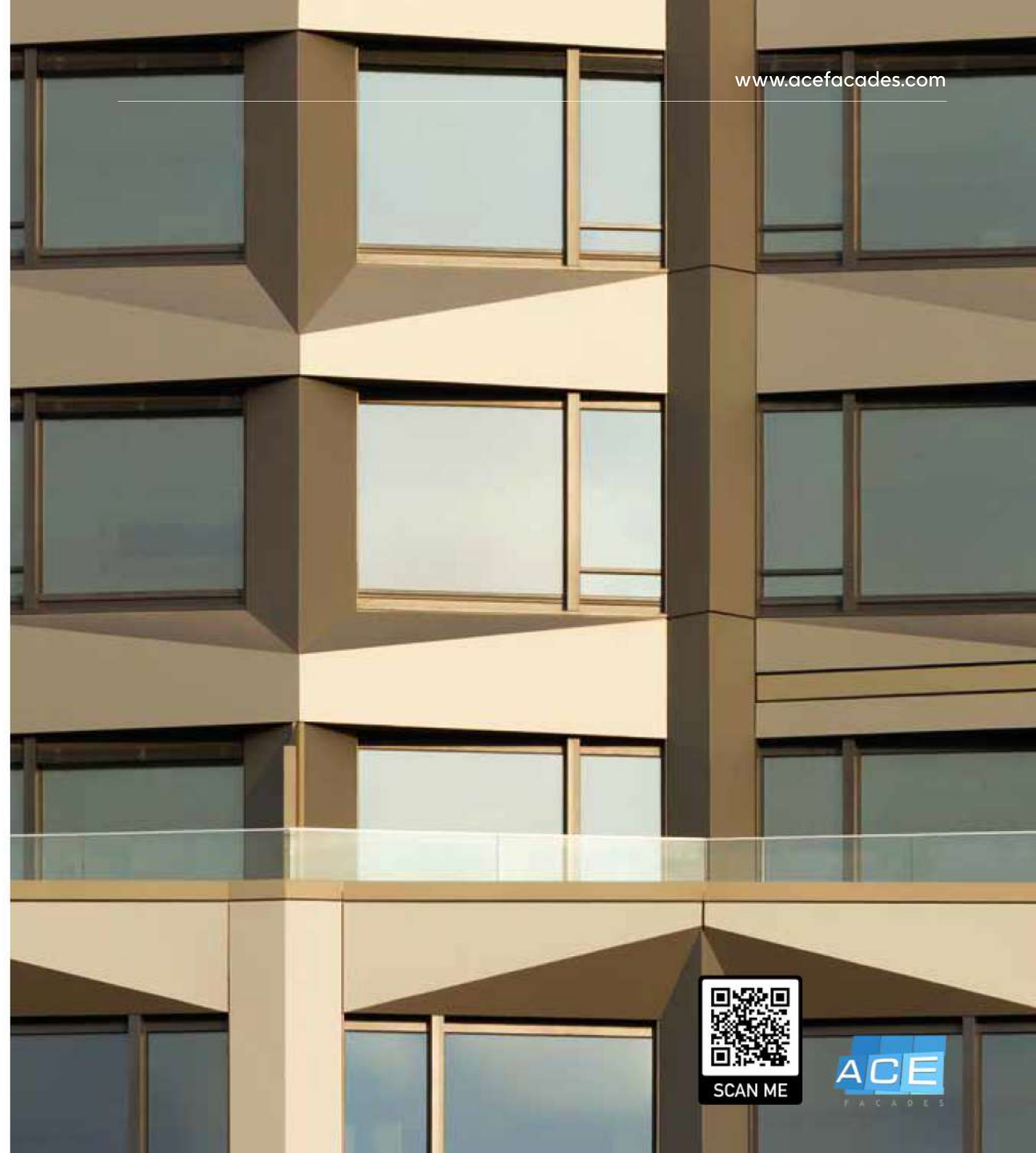
Country of Origin

3A Composites GmbH has developed, manufactured and marketed high-quality aluminum composite panels, structural composite material, plastic sheets and lightweight foam boards for architecture, visual communication and transport & industry markets since 1969.

The company's famous brands ALUCOBOND®, DIBOND®, ALUCORE®, KAPA® and FOREX®, have established its reputation as a global company.

The “skin of architecture” is a core topic of modern construction. Building envelopes therefore deserve particular attention. They can be simple and functional, exciting and representative. The proportion, surface structure and colouring of façades lead to the creation of unique structures; their interplay characterizes the ALUCOBOND® idea.

With over 50 years of experience 3A Composites is listening to the needs of architects, fabricators and installers. Thousands of projects worldwide serve as an inspirational starting point in the planning process of any construction project.



## Equitone



BELGIUM



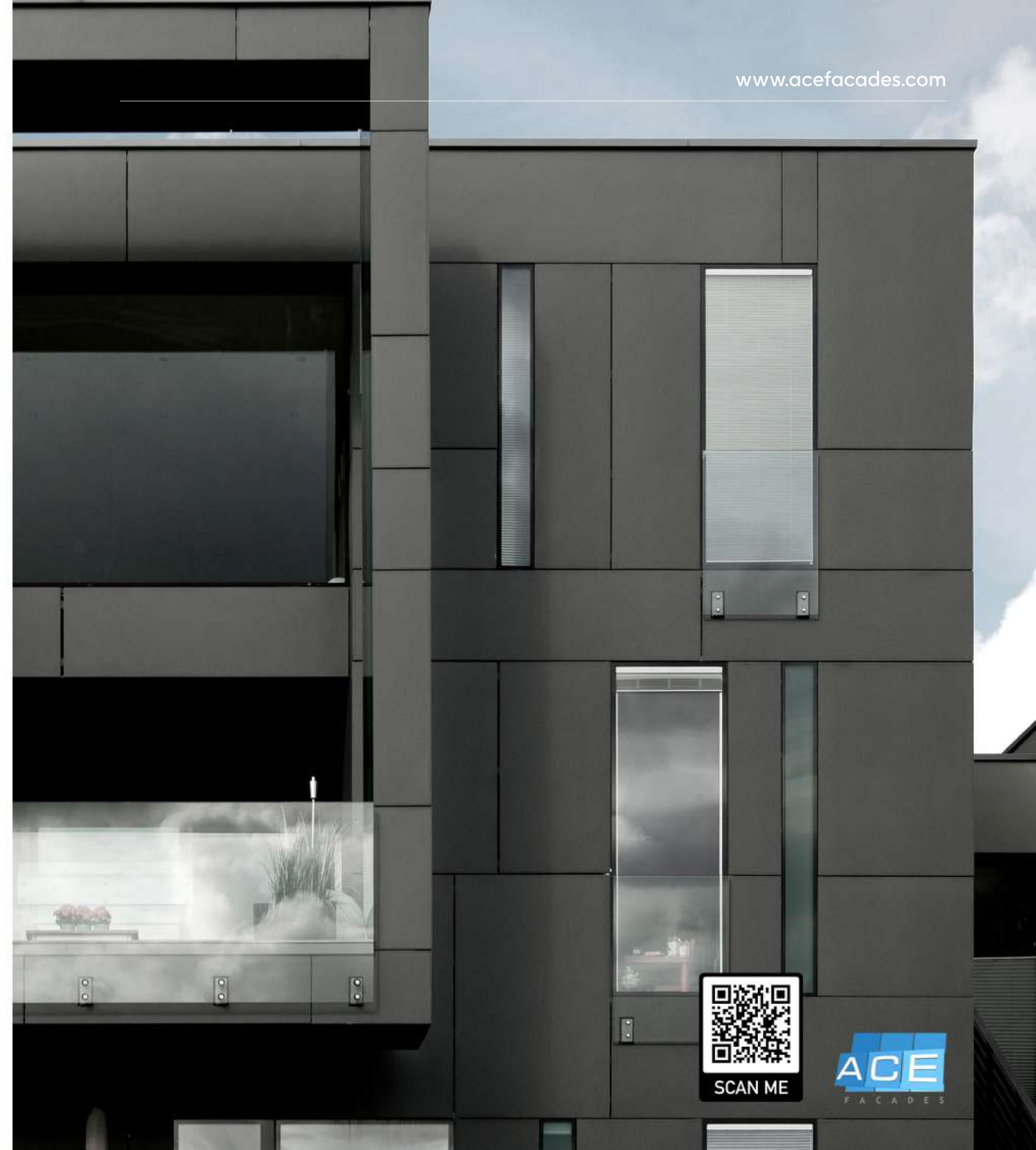
Country of Origin

When Ludwig Hatschek invented fiber cement in the late 19th century, he combined the basic elements of the earth: mineral materials, water, air and fire (heat) in a simple filtration process. He named the resulting material "Eternit", hinting at the superior durability of this new material. The mother company, Etex, has been manufacturing fiber cement materials since 1905. The most prestigious incarnation in this proud heritage of unique materials is the EQUITONE® facade material range.

The Hatschek production process makes each EQUITONE facade panel unique with an individual fiber cement texture.

Today EQUITONE has a full range of through-colored, untreated fiber cement materials. Leading architects of our time are exploring and transforming the EQUITONE material in remarkable facade designs.

EQUITONE facade materials offer unparalleled design flexibility. The fiber cement material is through-colored, which means the surface displays the inner texture and color of the core fiber cement material. No matter what facade design options you explore, the through-colored materials can be transformed into crisp, monolithic facade details.



Argeton



GERMANY

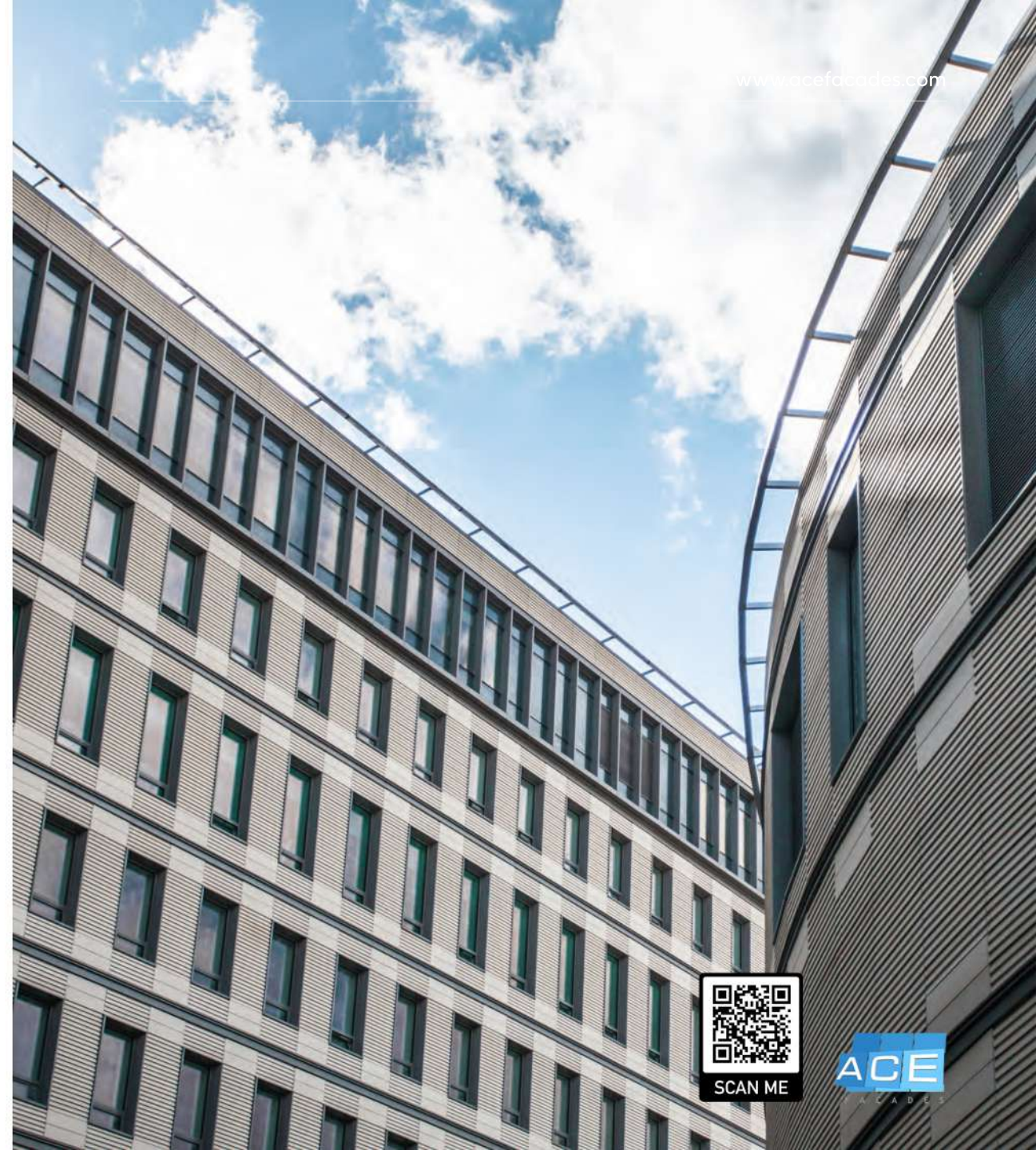


Country of Origin

Argeton, at the beginning of the 1980's, originally was the name of a joint effort of a number of stakeholders aiming to realize the manufacturing of terracotta façade panels. The original product known as Argeton is produced in our Argeton factory in Görlitz. The original product and brand continues to exist with genuine quality assurance as well as innovations. Argeton allows you to create timeless modern façades with the unmistakable character of the natural product clay. All based on a systematic and future oriented product development, a service oriented sales team and the leverage of a large group of companies. Argeton is part of the Wienerberger group of companies.

Our wide range of colour shades, surfaces, textures and profiles inspires creative designs for façades that make their surroundings more beautiful, sustainable and comfortable. Together with you, we would like to develop the individual and custom-made facade panel.

Whether a vertical or horizontal arrangement, whether curved plates or bar tiles, in any case, our plates are characterized by an easy installation. Highest quality "Made in Germany".



Faveker



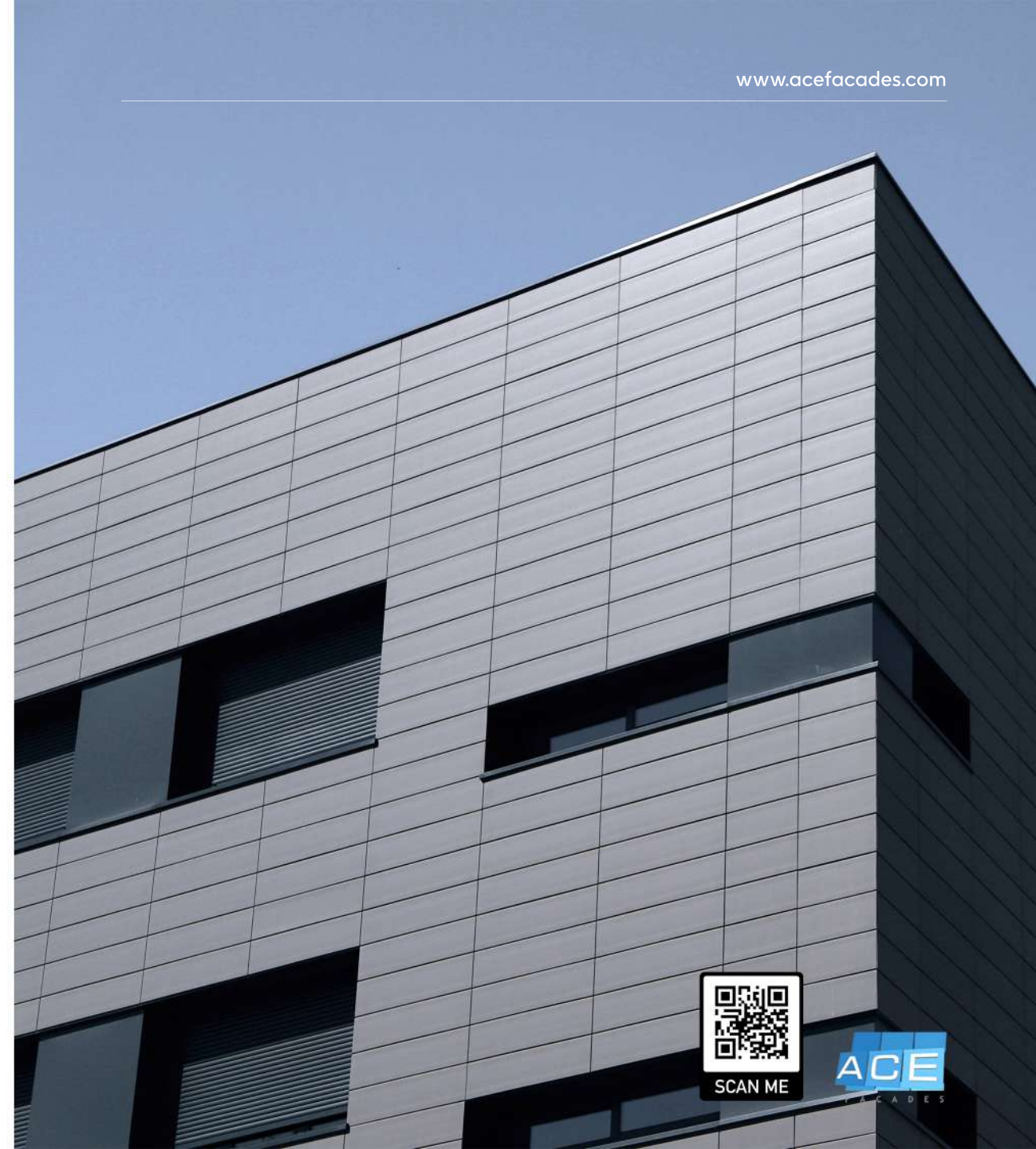
SPAIN



Country of Origin

Faveker® set out 7 years ago as façade division of GRES ARAGÓN, a company founded over 75 years ago in the sector that started out as a small pottery workshop and nowadays has become an internationalised company with 1,000 natural and porcelain stoneware catalogue items in 100 countries. FAVEKER® products can be found in residential buildings, public facilities or hotel resorts, shopping malls and leisure areas worldwide. FAVEKER® is a company that keeps its passion for innovation, quality work and creation of added value by helping retain population in the territory while creating quality employment thanks to zero-waste resources and sustainable and responsible management of its products.

Faveker® is an extruded ceramic-ventilated-façade system manufacturer, used on refurbishment, new construction and customized projects. We help to get more building sustainability, which turns into more efficiency and comfort, thanks to the better thermal and sound insulation, while providing the building with healthy and eco-friendly materials and 100% recyclable systems which are made of at least 40% recycled material. Our porcelain ceramic tiles are manufactured by extrusion and verified since the reception of raw materials to the packaging under strict quality controls. These are high-resistance products with no maintenance needed.



**Italmesh**



ITALY

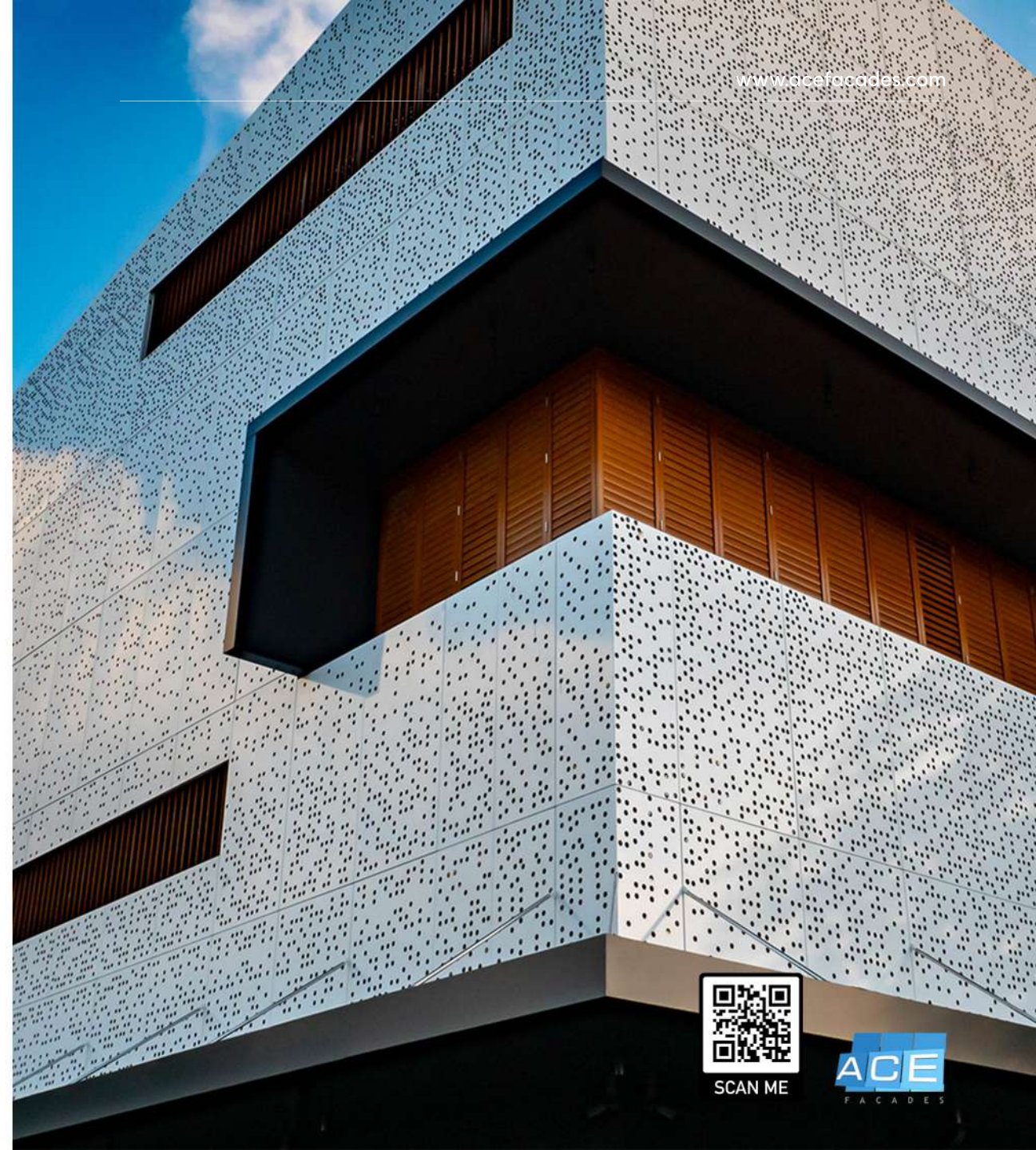


Country of Origin

Italmesh offers more than 300 models of expanded metal, realized in different materials and with different thicknesses to the market. The innovative anchoring systems designed and patented by the Italmesh team allow easy and quick assembly. The powder coated or anodized finish allows the material to self-clean and maintain its physical and aesthetic characteristics over time. Italmesh is present on the Middle Eastern market, also India, Seychelles, Nigeria and Australia. In recent years, thanks to its continuous growth, the company has been presenting its products and services in the European and American market with great interest.

Italmesh strongly believes that Made In Italy products have an added value, a combination of elegance and efficiency. For this Italmesh strongly wanted to keep all the production phases in Italy and to use Italian and 100% guaranteed products.

Through the choice of materials and meticulous control of the production process, Italmesh guarantees high quality standards, thus ensuring the efficiency and unmistakable authenticity of Made in Italy for each individual creation. In fact, Italmesh's commitment is also to stand out in the sector and to distinguish itself in the world for the peculiarity and the all-Italian style of the projects.



SCAN ME



## Fundermax

**: : Fundermax**  
For you to create

AUSTRIA



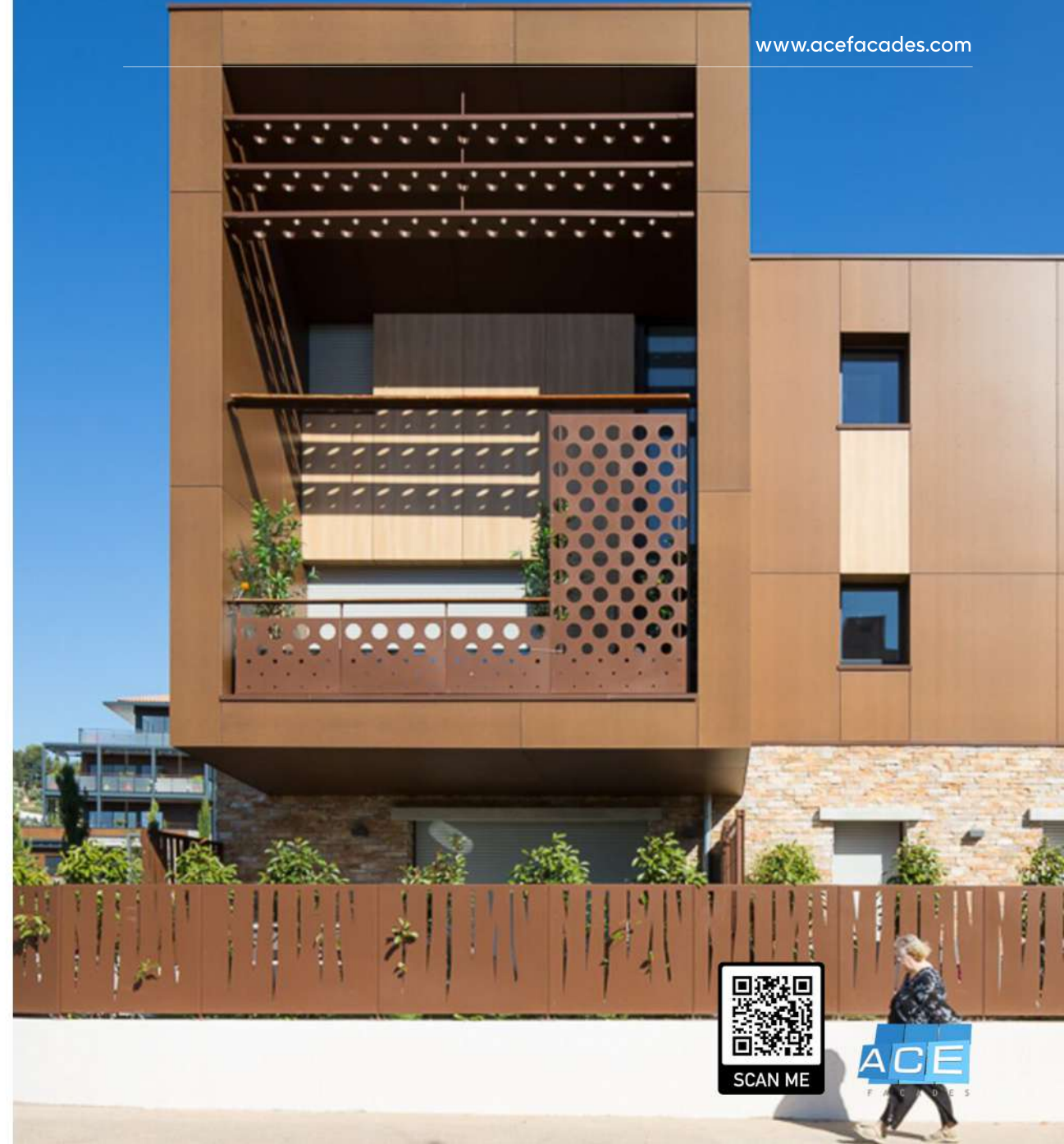
Country of Origin

Fundermax GmbH is a leading innovator in the field of high-performance materials, recognised internationally as a premier manufacturer of high-pressure laminates, compact panels, and wood-based solutions for architectural and interior applications.

With over 130 years of experience, Fundermax has built a strong tradition rooted in precision, craftsmanship, and a deep appreciation for natural raw materials. The company has evolved into a global market leader for compact laminates, offering high-quality solutions for both interior and exterior use, defined by durability.

With unique insights into market demands, trends, and evolving industry standards, Fundermax is committed to providing aesthetically refined and high-performance materials for a wide range of applications. The company believes that long-term success is built on quality—across its production processes, product range, and customer support.

Fundermax's extensive portfolio includes raw and coated chipboard panels, high-pressure laminate panels, compact interior and exterior panels, biofibre boards, and decorative surface solutions.



## WoodN Industries



ITALY



Country of Origin

WoodN is a worldwide company that offers solutions for the design and building industry, satisfying the highest aesthetic and quality standards. The capability of WoodN to develop projects, becomes essential to allow the architect to materialize his ideas. WoodN, thanks to its flexibility and productive know-how, stays close to the architect since the initial stages. The WoodN systems shape themselves on each architectural concept.

WoodN, was established in 2002, with its headquarters in Belluno, while the production plants are situated in Treviso.

WoodN is a composite material, consisting of a wood and PVC-based polymer alloy. The wood used for all WoodN projects comes from FSC certificated supply, which identifies responsibility sourced wood from ethically managed forests. WoodN adheres to strict environmental, social and economic standards for products of beech and spruce wood.

The result of this alchemy is a technical wood, which can help overcome the limits of wood, enhancing durability and preventing the need for constant maintenance, while keeping its natural look and materiality.



Trimo  
**TRI  
MO**

SLOVENIA



Country of Origin

Since its formation in 1961, Trimo has established itself as one of Europe's leading companies developing original and complete building envelope systems (facades and roofs) and modular space solutions. The company's excellent reputation for innovation, quality and customer support continues to impress as new markets and new opportunities are explored. Expert knowledge, sustainability, reliability and a focus on the future are all basic components that have taken Trimo around the world. Today Trimo sells its building envelope systems and services under its own brand across more than 60 countries worldwide

Trimo has established a sales network in almost 30 countries and has production facilities in Slovenia and Serbia.

Portfolio of partners includes companies such as Airbus, London Heathrow Airport, Nestle, Philips, DHL, Porsche, IKEA, Prologis, Mercedes Benz, Coca Cola and many others.



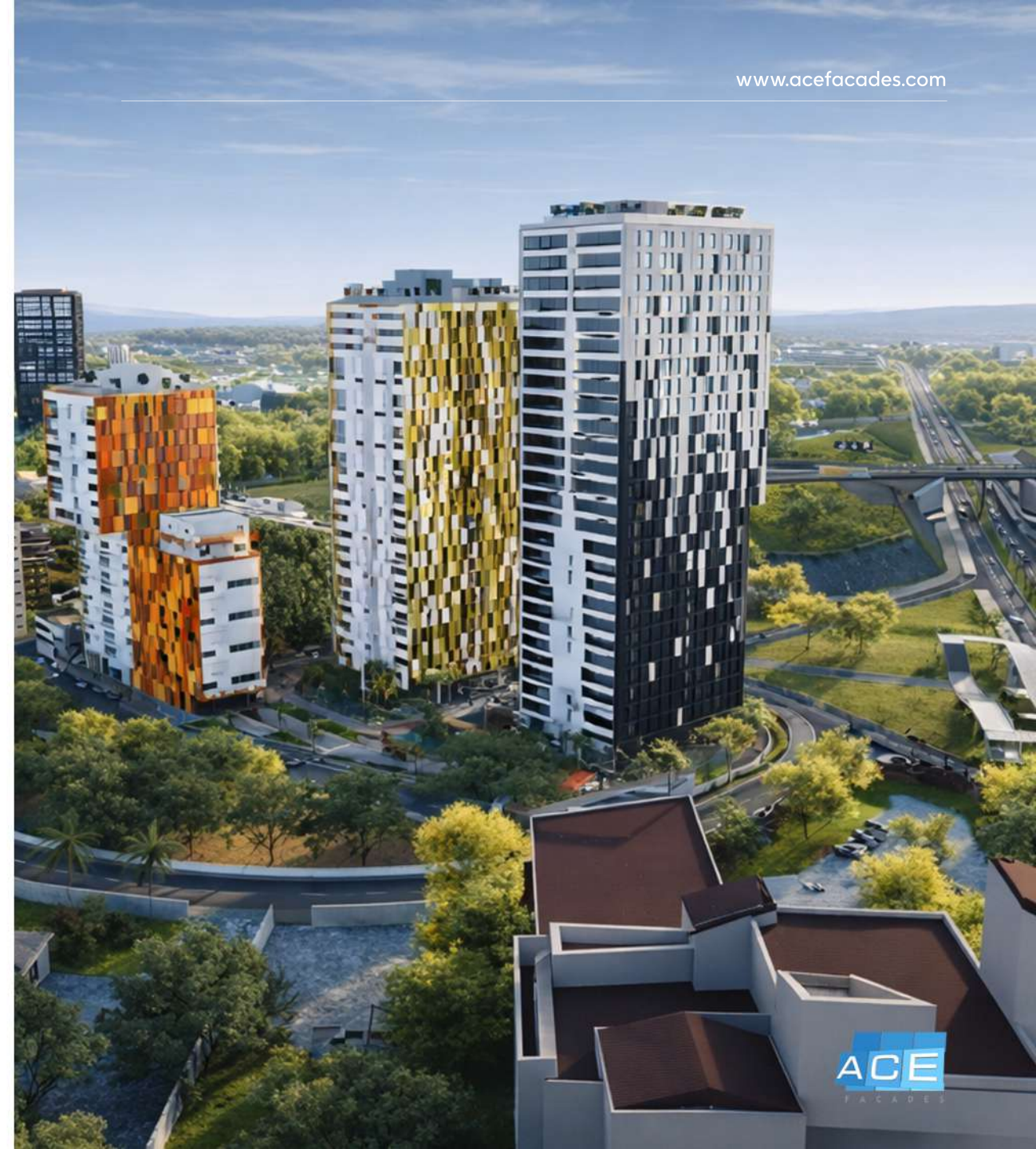
# On-Going Projects



# Villaggio Vista Echo Tower

Villaggio Vista Echo Tower is a landmark luxury residential high-rise located in the prestigious Airport Residential Area of Accra, Ghana, developed by Trasacco Estates Development Company Limited. Rising 30 storeys, it stands as the tallest building in Accra, redefining the city's skyline and setting a new benchmark for vertical living.

LOCATION	Accra, Ghana
PARTNERS	<b>3A Composites GmbH</b> - ALUCOBOND® Panels; <b>Schüco International KG</b> - Aluminium profiles and accessories. <b>Saint-Gobain</b> - Glazing solutions.
PROJECT STATUS	Under Construction
TYPE	Residential
SCOPE OF WORK	Design, Supply, Fabrication and Installation of Alucobond Plus fire-rated cladding panels (approx. 8,000 sqm), Installation of double-glazed aluminium windows, doors and curtain wall systems, including all associated framing, glazing, sealing and finishing works.



# Courtyard by Marriott Hotel

Courtyard by Marriott Hotel is a contemporary hospitality development located in the heart of GRA, Ikeja. Positioned adjacent to the existing Lagos Marriott Hotel, the project reinforces MacFolly Hospitality's strategic commitment to strengthening and elevating the local hospitality landscape.

LOCATION	Ikeja, Lagos, Nigeria
PARTNERS	<b>3A Composites GmbH- ALUCOBOND® Panels; Reynaers Aluminium NV/SA- Aluminium profiles and accessories; Saint-Gobain- Glass; Dormakaba- Entrance revolving door</b>
PROJECT STATUS	Under Construction
TYPE	Hospitality
SCOPE OF WORK	Supply, Fabrication & Installation approximately 3200 sqm of Alucobond Plus (fire rated panels), double glazed aluminium windows, doors, curtain walls, Revolving Door



# Nestav Hangar

Nestav Hangar is a purpose-built aviation facility located in both Lagos and Port Harcourt, designed to support the maintenance and servicing of private jets. The development integrates specialized hangar spaces delivering a functional environment tailored to high-performance aircraft operations. The project is being executed by Hammakopp Consortium, a subsidiary of the Nestoil Group

LOCATION	Lagos, Nigeria & Port Harcourt Nigeria
PARTNERS	<b>Schüco International KG</b> - Aluminium profiles and accessories; <b>Saint-Gobain-Glass</b> ; <b>Dormakaba GmbH</b> - Automatic sliding doors
PROJECT STATUS	Under Construction
TYPE	Commercial
SCOPE OF WORK	Supply, Fabrication & Installation of double glazed aluminium windows, doors and curtain walls



# Sifax Head Office

SIFAX Group is a leading diversified conglomerate with strategic interests across maritime, aviation, oil and gas, logistics, financial services, and hospitality. Through its network of subsidiaries, the Group delivers integrated solutions spanning port operations, freight forwarding, haulage, aviation ground handling, and premium hospitality services.

LOCATION	Ijora, Lagos, Nigeria
PARTNERS	<b>3A Composites GmbH</b> - ALUCOBOND® Panels; <b>Reynaers Aluminium NV/SA</b> - Aluminium profiles and accessories; <b>Saint-Gobain</b> - Glass
PROJECT STATUS	Under Construction
TYPE	Commercial
SCOPE OF WORK	Supply, Fabrication & Installation approximately 2400 sqm of Alucobond Plus (fire rated panels), double glazed aluminium windows, doors, curtain walls



# World Bank Head Office

The refurbished World Bank Head Office, designed by Manning Architects, stands as a benchmark for sustainable development and high-performance design. Conceived as a showcase for environmentally responsible construction, the project is targeting LEED Gold, WELL, and EDGE certifications, reflecting a strong commitment to energy efficiency and resource optimization.

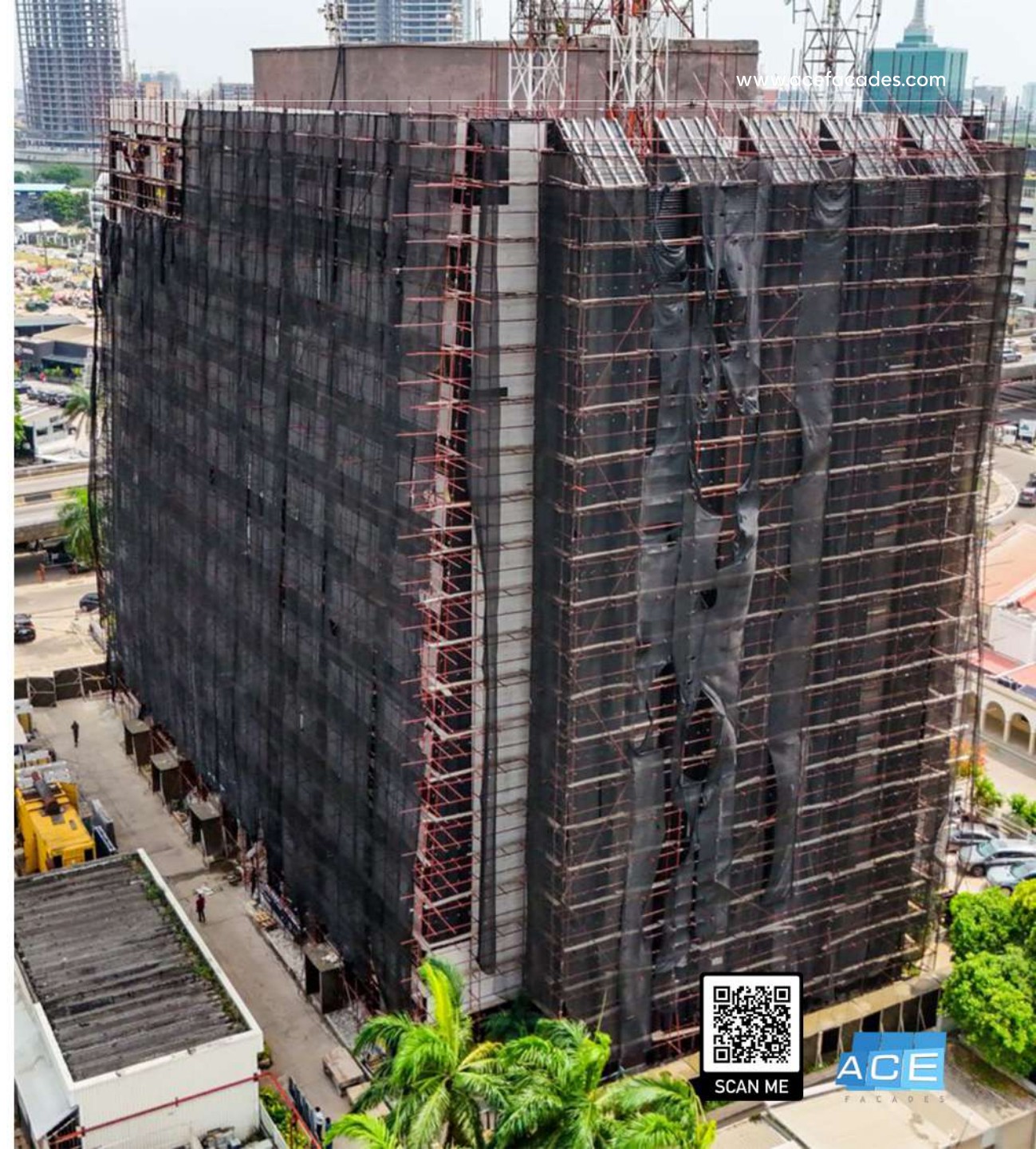
LOCATION	Asokoro, Abuja, Nigeria
PARTNERS	<b>Schüco International KG</b> - Aluminium profiles and accessories; <b>Saint-Gobain-Glass</b> ; <b>Dormakaba GmbH</b> - Automatic sliding doors
PROJECT STATUS	Under Construction
TYPE	Institutional
SCOPE OF WORK	Supply, Fabrication & Installation of double glazed aluminium windows, doors, curtain walls and Automatic Sliding doors



# Marble House

The refurbished Leadway Marble House (formerly Union Marble House) is a prime office development located in Ikoyi, Lagos. Developed by Union Bank, the building comprises nine floors, each with an efficient floor plate of approximately 999 sqm, offering modern, flexible workspace in one of Lagos' most prestigious commercial districts.

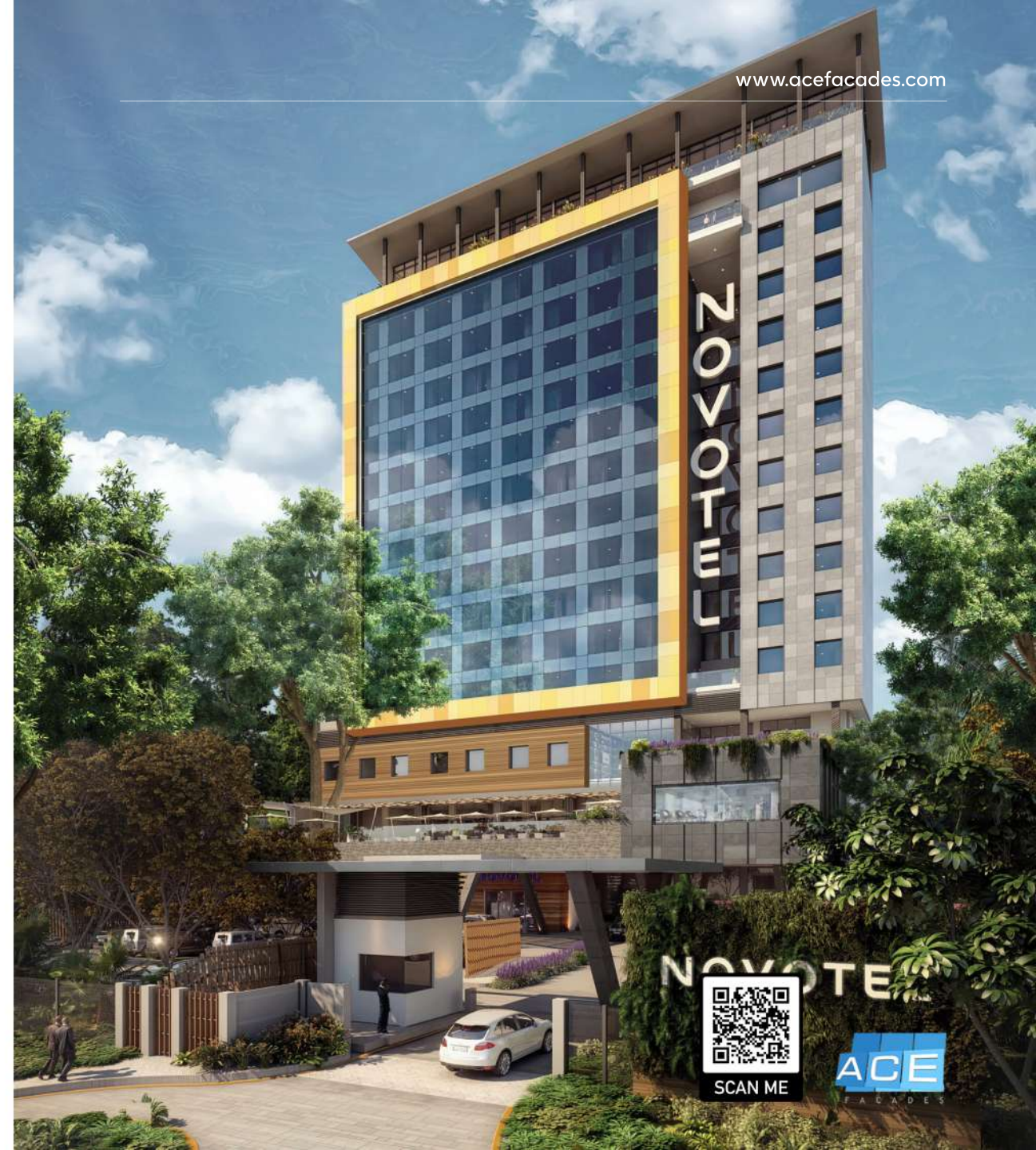
LOCATION	Ikoyi, Lagos, Nigeria
PARTNERS	<b>Alumil S.A.</b> - Aluminium profiles and accessories. <b>Saint-Gobain</b> - Glass. <b>ASCALE</b> - Porcelain Slabs
PROJECT STATUS	Under Construction
TYPE	Commercial
SCOPE OF WORK	Supply, Fabrication & Installation of double glazed aluminium windows, doors, curtain walls, aluminium louvers and approximately 6600sqm of 12mm thick Porcelain slabs, with Fire Barrier and water proofing



# Novotel Hotel

Novotel Hotel is an ongoing hospitality development project located on Ahmadu Bello Way, Victoria Island, Lagos. It is being built by Ekulo Group of Companies and AccorHotels. The 170-key property will feature an all-day dining restaurant, a lobby bar, a pool bar, a swimming pool, a gym and 400 sqm of meeting space.

LOCATION	Victoria Island, Lagos, Nigeria
PARTNERS	<b>Alumil S.A.</b> - Aluminium profiles and accessories. <b>Saint-Gobain</b> - Glass.
PROJECT STATUS	Under Construction
TYPE	Hospitality
SCOPE OF WORK	Supply, Fabrication & Installation of Double glazed Unitized curtain wall (approximately 2000sqm), aluminium windows, doors, curtain walls, aluminium louvres, glass balustrade & Installation of approximately 5300sqm of ventilated porcelain slabs with rockwool insulation and fire barrier



# Radisson Hotel

Edo State launched the Radisson Hotel Project, a 172-room hotel as part of projects by the government to boost its tourism receipts and drive economic growth. The N19.6bn project commenced in July 2023 and expected to be completed soon.

LOCATION	Benin-City, Edo State, Nigeria
PARTNERS	<b>Alumil S.A.</b> - Aluminium profiles and accessories. <b>Saint-Gobain- Glass, 3A Composites GmbH</b> - Alucobond Panels, <b>DormaKaba</b> - Automatic sliding doors
PROJECT STATUS	Under Construction
TYPE	Hospitality
SCOPE OF WORK	Supply, Fabrication & Installation of double glazed aluminium windows, doors, curtain walls and approximately 2500sqm of Alucobond Plus (fire rated panels)



# Abuja Continental Hotel

Abuja Continental Hotel is one of African's iconic Hotels situated at the very centre of Abuja in Nigeria, blending nature with sophistication; displaying a tradition of warmth and impeccable service. Abuja Continental Hotel is poised to meet every guest needs.

---

LOCATION Abuja, Nigeria

---

PARTNERS

---

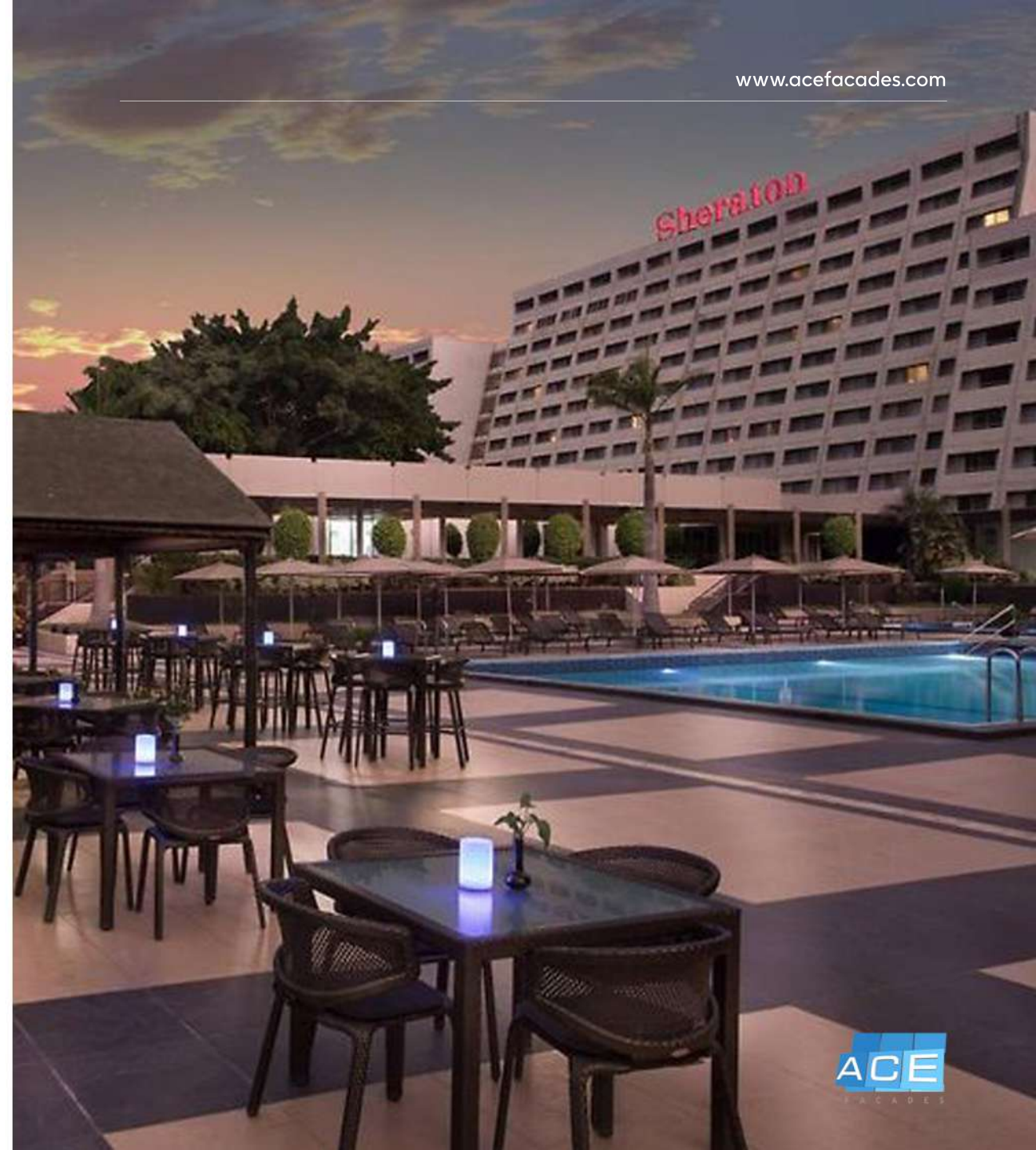
PROJECT STATUS Renovation

---

TYPE Hospitality

---

SCOPE OF WORK Installation of approximately 8500sqm of 10mm ceramic tiles



# Completed Projects

05

ACE

# Irish Embassy

The Irish Embassy is responsible for a range of vital functions including passport and consular services, promoting Irish economic interests and supporting human development. The new building is expected to cost €3 million and will be in a compound with embassies from other EU countries, with an enhanced level of security.

LOCATION	Abuja, Nigeria
PARTNERS	<b>Equitone</b> - Fibre cement panels, <b>Alumil S.A</b> -Curtain wall profiles & accessories, <b>Saint Gobain</b> - Glass, <b>Reynaers</b> - Internal partitions profiles and accessories
YEAR	2026
TYPE	Institutional
SCOPE OF WORK	Supply, Fabrication and Installation of Equitone Fibre cement panels with foamglass insulation, fire barrier, Double glazed curtainwall, windows and Doors with 3M Blast film, Fire proof Door, Bullet Proof Partitions (BR6), Access control internal doors, aluminium brise soleil and aluminium capping



# Hyatt Hotel

Lagos Hyatt Regency, Ikeja is a hotel under construction with Sentinel Hospitality as its developers. It is located at Ladoke Akintola Road, Ikeja GRA. This hotel development which commenced in the first quarter of 2021 has been completed and now offers up to 142 rooms.

LOCATION	Ikeja, Lagos, Nigeria
PARTNERS	<b>Alumil S.A-</b> Aluminium profiles & accessories, <b>3A Composites GmbH-</b> Alucobond Plus, <b>Saint Gobain-</b> Glass, <b>Dormakaba-</b> Automatic Sliding Doors, <b>Showerline-</b> Shower cubicles
YEAR	2025
TYPE	Hospitality
SCOPE OF WORK	Fabrication and installation of Double Glazed aluminium curtain walls, windows, doors, Alucobond cladding, Glass Shower cubicles & Automatic Sliding Doors



# VICI Restaurant

VICI Restaurant belongs to Pistachio Foods, owners of the upscale Slow and RSVP restaurants in Lagos. From its contemporary luxury design elements to its iconic facade, VICI aims to elevate the culinary experience. The dining rooms, bars, terrace and banquet room have all been designed to reflect a desire to celebrate food, drinks, music and elegance.

LOCATION	Victoria Island, Lagos, Nigeria
PARTNERS	<b>Alumil S.A</b> - Aluminium profiles & accessories, <b>Dott Gallina</b> - Polycarbonate cladding and skylight
YEAR	2025
TYPE	Commercial
SCOPE OF WORK	Supply, Fabrication and installation of double glazed windows, doors, curtain wall, Polycarbonate cladding and zinc metal cladding



SCAN ME



# First Pension Custodian

First Pension Custodian Nigeria Limited (FPCNL) is one of the foremost local provider of custodial pension services in Nigeria. FPCNL is a wholly owned subsidiary of First Bank of Nigeria Limited (FirstBank), the commercial banking subsidiary of FBN Holdings Plc.

LOCATION	Victoria Island, Lagos, Nigeria
PARTNERS	<b>Alumil S.A-</b> Aluminium profiles & accessories, <b>3A Composites GmbH-</b> Alucobond Cladding, <b>Saint Gobain-</b> Glass, <b>Italmesh-</b> Aluminium mesh cladding
YEAR	2023
TYPE	Commercial
SCOPE OF WORK	Supply, Fabrication and Installaton of double glazed windows, doors, curtain walls, internal glass partitions, dry wall partitions, glass balustrade, Alucobond cladding and Aluminium Mesh Cladding



# Okija Event Center

Set within the culturally rich town of Okija, the Okija Event Center emerges as a bold architectural statement; where contemporary design meets Igbo heritage. Located in Ihiala Local Government Area, a region known for its deep-rooted traditions and growing urban development, the project reflects the town's transition from a historic agrarian hub into a modern destination for cultural expression.

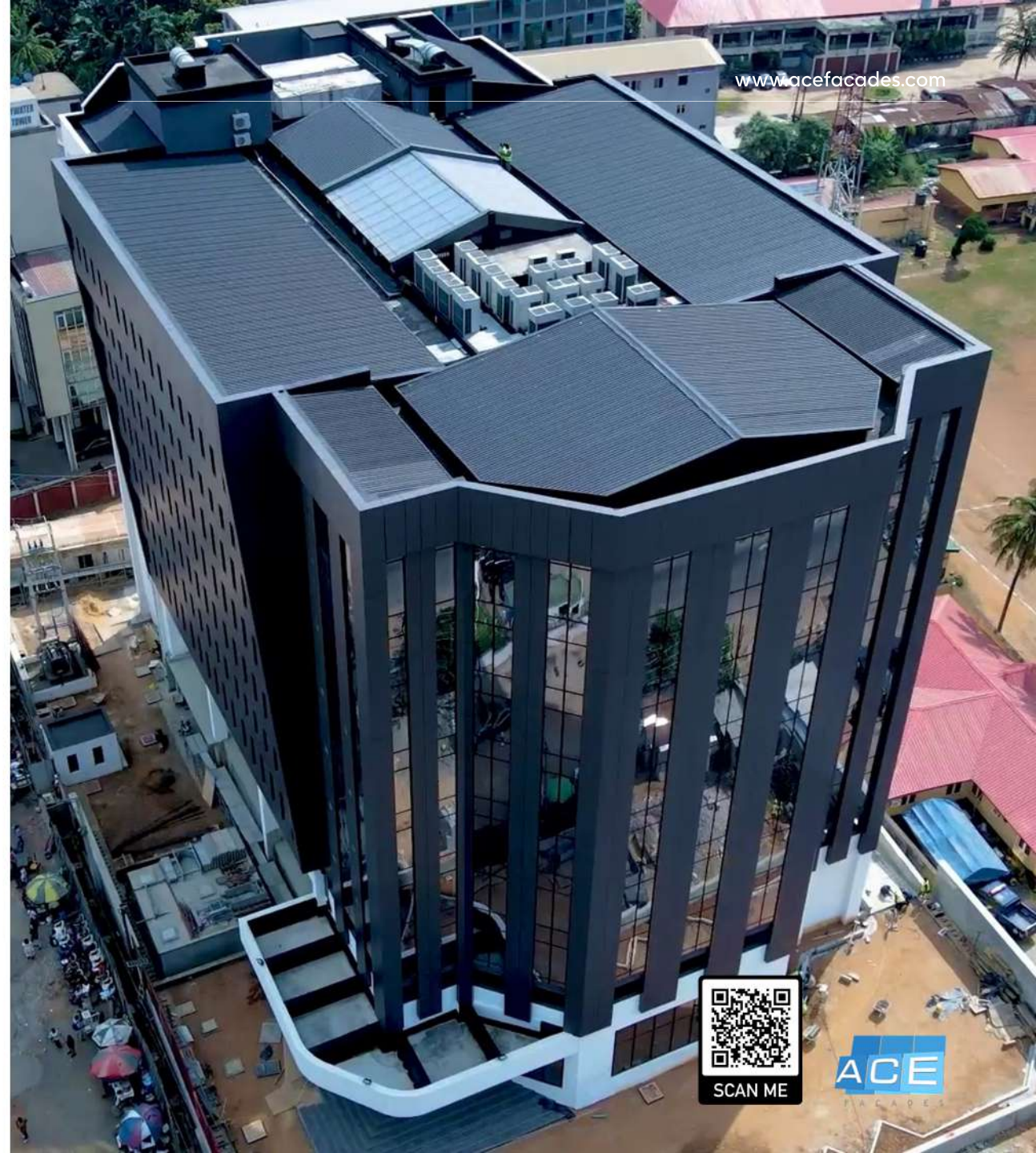
LOCATION	Okija, Anambra, Nigeria
PARTNERS	Fundermax- High Pressure Laminates, 3A Composites GmbH- Alucobond cladding, Nigerite- Cement boards
YEAR	2025
TYPE	Commercial
SCOPE OF WORK	Supply, Fabrication and Installation of 1000sqm High Pressure Laminate cladding, 1400sqm of Alucobond Plus (fire rated panels) cladding, Aluminium ceiling and 1800sqm of cement board cladding



# The Phoenix

The Phoenix is a commercial development located at Mobolaji Bank Anthony Way, Ikeja. The 10-floor development will provide a total gross leasable area of 8000sqm with retail areas, meeting and conference rooms, a lobby lounge, courtyard canteen, a gym as well as parking spaces.

LOCATION	Ikeja, Lagos, Nigeria
PARTNERS	Alumil S.A- Aluminium profiles & accessories, Saint Gobain- Glass.
YEAR	2025
TYPE	Commercial
SCOPE OF WORK	Supply, Fabrication and Installation of External Curtain wall Facades, Aluminium windows and doors, Skylight, Glass Balustrade and HPL Cladding



# IBIS Styles

Located onsite at the Kotoka International Airport, the Ibis Styles Accra offers an escape from the hustle and bustle of the airport. The hotel has 192 rooms with colourful, friendly decor and theme. The hotel offers various amenities such as fitness room, Thai massage and Spa room, and outdoor pool, 2 bars and a restaurant.

LOCATION	Accra, Ghana
PARTNERS	<b>Alumil S.A-</b> Aluminium profiles & accessories, <b>3A Composites GmbH-</b> Alucobond Plus, <b>Saint Gobain-</b> Glass, <b>Dormakaba-</b> Automatic Sliding Doors
YEAR	2012
TYPE	Hospitality
SCOPE OF WORK	Design, Supply, Fabrication and Installation of Alucobond (Approx 6,000 sqm) Installation of Aluminium windows and doors



# Greystone Tower

Greystone Tower is an attractive mixed-use, Grade A, office and residential apartment building that fronts on Idowu Taylor Street and Engineering Close, Victoria Island. The building is arranged over 19 floors (inclusive of the ground floor) with a 5-level multi story park.

LOCATION	Victoria Island, Lagos, Nigeria
PARTNERS	<b>Alumil S.A</b> -Curtain wall profiles & accessories, <b>Saint Gobain</b> - Glass, <b>Reynaers</b> - Internal partitions profiles and accessories
YEAR	2020
TYPE	Commercial
SCOPE OF WORK	Design, Supply and Fabrication of Alucobond (Approx 1,000 sqm) Supply, Fabrication and Installation of: 22 Automatic Sliding Doors with access control, Double Glazed Curtain Wall Aluminium Windows and Doors Car Park Brise Soleil



# VRA Akuse

Volta River Authority (VRA) was established with the mandate to generate, transmit and distribute electricity under the Volta River Development Act, Act 46 of the Republic of Ghana. It is located in a very serene environment in Akuse, the eastern region of Ghana.

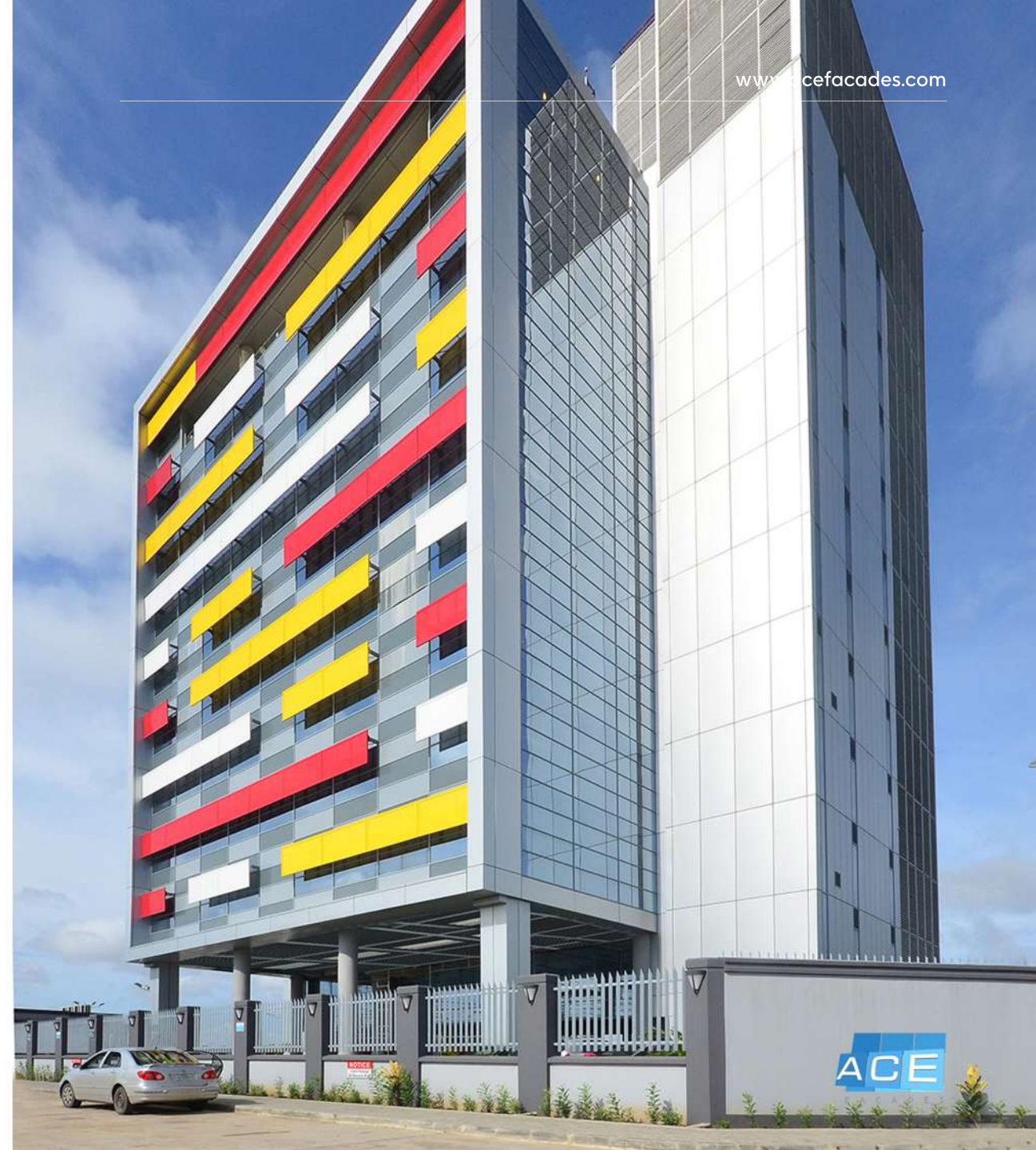
LOCATION	Akuse, Ghana
PARTNERS	<b>Alumil S.A</b> -Curtain wall profiles & accessories, <b>Saint Gobain</b> - Glass, <b>3A Composites GmbH</b> - ALUCOBOND® Panels
YEAR	2022
TYPE	Commercial
SCOPE OF WORK	Supply and Installation of: Structural Curtain Wall, Aluminium windows, Doors, Frameless Glass Partitions & Alucobond Cladding



# Bay Atlantic

Built on a site of about 9130sqm, The Bay Atlantic Lekki delivered 10,200sqm of lettable commercial space on 9 floors and a canteen on the mezzanine floor. The building which adjoins the busy Lekki-Epe Expressway has a double glazed envelope as the preferred 'skin' requiring extensive shading for its South and North facades to reduce solar gain and glare.

LOCATION	Lekki, Lagos, Nigeria
PARTNERS	<b>Alumil S.A</b> -Curtain wall profiles & accessories, <b>Saint Gobain</b> - Glass, <b>3A Composites GmbH</b> - ALUCOBOND® Panels
YEAR	2012
TYPE	Commercial
SCOPE OF WORK	Design, Supply, Fabrication and Installation of Alucobond (Approx 3,000 sqm)



# Contact Information



U.A.E



**ACE FACADES TRADING - FZCO**

IFZA Business Park,  
Dubai Digital Park, (DDP)  
Silicon Oasis, Dubai,  
United Arab Emirates  
**Tel: +971 4 228 52 85**

Factory Address  
Ras Al-Khaimah,  
United Arab Emirates

GHANA



**ACE FACADES LIMITED**

Office Address  
By Manet Junction,  
Off Spintex Road,  
P.O Box CT 11191, Cantonements  
**Tel: +233 266 032 100**

[contact@acefacades.com](mailto:contact@acefacades.com)  
[www.acefacades.com](http://www.acefacades.com)



[@ace\\_facades](https://www.instagram.com/ace_facades)

NIGERIA



**ACE FACADES LIMITED**

Office/Factory Address  
373 Agege Motor Road,  
By Challenge Bus Stop  
Mushin, Lagos, Nigeria  
**Tel: +234 805 900 7477**

IVORY COAST



**ACE FACADES COTE D'IVOIRE**

Office Address  
Abidjan Cocody II Plateaux,  
Vallons, Rue Des Jardins 09 BP  
284 Abidjan 09  
**Tel: +225 056 517 7698**



#### CONFIDENTIALITY

*This Business Portfolio is confidential and contains proprietary information and intellectual property of Ace Facades Ltd. Neither this Business Portfolio nor any of the information contained herein may be reproduced or disclosed under any circumstances without the express written permission of Ace Facades Ltd.*

# Redefining the Skyline through Innovative Engineering

Building Spaces that Define the Cities of Tomorrow.

[www.acefacades.com](http://www.acefacades.com)